

WELCOME	2
USING THE SYSTEM	3
MOUSE CONTROL.....	3
UNLOCK NAVIGATING MENUS.....	3
CHANGE THE PASSWORD OF NVR.....	4
NVR/DVR NETWORK SETTING.....	5
SETTING THE TIME.....	6
CONNECT THE IP CAMERAS TO RECORDER.....	7
GET THE LIVE.....	9
SET CAMERA VIDEO QUALITY.....	11
OPTIONAL: HOW TO ACTIVATE THE AUDIO IN YOUR NVR.....	12
OPTIONAL: CHANGE THE IP ADDRESS OF THE CAMERA FROM NVR.....	13
<i>Optional: Switch PAL/NTSC at front-end device video format</i>	14
CONNECT AN ONVIF IP CAMERA.....	15
RECORDING THE VIDEO	15
<i>Install the hard drive to the recorder</i>	15
<i>Configure the recording</i>	16
<i>Enable the motion recording</i>	17
<i>Optional: Enable external alarm recording</i>	19
PLAYBACK THE FOOTAGE.....	21
INSTANT PLAYBACK (ONLY AVAILABLE WITH RACK MOUNT NVR).....	22
BACKUP THE FOOTAGE TO USB THUMB DRIVE.....	22
EMAIL NOTIFICATION.....	24
SET UP THE EMAIL ACCOUNT.....	24
CHECK THE RECORDING CONFIGURATION.....	25
ENABLE MOTION DETECTION WITH EMAIL NOTIFICATION.....	26
<i>Optional: Enable external alarm email notification</i>	28
ENABLE VIDEO LOSS EMAIL NOTIFICATION.....	29
ENABLE VIDEO BLIND EMAIL NOTIFICATION.....	30
ENABLE DISK FAILED NOTIFICATION.....	31
USING CMS5 FOR PC OR MAC	32
SYSTEM REQUIREMENTS.....	32
INSTALLING SOFTWARE.....	32
NETWORK CONNECTION AND SETTINGS.....	32
<i>Connect to the camera</i>	32
<i>Optional 1: What should you do when IP address get conflict?</i>	34
<i>Optional 2: How to add the NVRs to CMS5 outside of LAN</i>	34
<i>Optional 3: How to Configure the network setting of the NVR manually</i>	35
LIVE VIDEO.....	36
<i>Watch the live</i>	36
<i>Digital ZOOM</i>	37
<i>Activate the audio (camera supports audio and connect to the audio pick-up only)</i>	38
<i>PTZ control (camera with motorized zoom lens only)</i>	39
CHANGE THE PASSWORD OF THE CAMERA.....	39
<i>Set a new password for "admin"</i>	39
<i>Optional1: How to create an account for operator?</i>	40
PLAYBACK THE VIDEO FROM HARD DRIVER.....	41
DOWNLOAD THE VIDEO TO YOUR COMPUTER HARD DRIVE.....	42
OTHER OPTIONS.....	43
<i>Video View</i>	43
<i>Video Tour</i>	44
<i>Local Alarm</i>	46
<i>Check the log</i>	46
<i>Setting Camera Parameters</i>	47
<i>Installing a new Firmware</i>	49
SMARTPHONE OR TABLET APPS.....	50

DOWNLOAD APP	50
REGISTRATION.....	50
CONNECTING TO YOUR IP CAMERA ON AN SMART PHONE OR TABLET.	51
LIVE VIEW INTERFACE	53
OPTIONAL.....	56
HOW TO CHANGE THE VIDEO QUALITY TO ADAPT TO LOW BANDWIDTH NETWORK.	56
CHANGE PASSWORD OF CAMERA.	57
SAVING LIVE STREAM TO YOUR SMART PHONE.....	60
VIEW SNAPSHOT AT LOCAL FILES.....	61
PLAYBACK FOOTAGE ON TF MEMORY CARD (CAMERAS WITH MICROSD ONLY)	62
OPTIONAL.....	64
HOW TO ENABLE THE MOTION RECORDING ON YOUR SMART PHONE.	64
DOWNLOAD FOOTAGE FROM TF MEMORY CARD (CAMERAS WITH MICROSD ONLY).....	65
ENABLE PUSH NOTIFICATION	66
RECEIVE THE IP SETTING FROM YOUR LOCAL NETWORK.	70
WEB BROWSER CONNECTION	70
CHECKING YOUR WEB BROWSER SECURITY LEVEL.....	70
ACCESS THE CAMERA OVER INTERNET.....	73

Welcome

Thank you for purchasing GOLBONG recorder!

This user manual is designed to be a reference tool for the installation and operation of recorder.

Here you can find information about the camera's features and functions, as well as information to aid in troubleshooting.

Many of the setup and installation sections below have corresponding videos on YouTube

To access the setup videos, please go to <https://www.youtube.com/golbongtoday>



For access to the quick start guide and other support information, go to <http://www.golbong.com/support.asp>

To contact GOLBONG support, please do one of the following:

- a. Visit <http://www.golbong.com/contact-us.asp> and use the email form
- b. or Email GOLBONG Customer Support support@golbong.com

Important Security Warning



In order to keep your GOLBONG camera secure and prevent unauthorized access, please make sure to follow the steps below: Never use the default password for your camera. Always ensure that your

password is at least 8-10 characters long and contains a combination of lowercase characters, uppercase characters as well as numbers.

Using the System

Mouse control

The included USB mouse makes using the DVR PRO simple and efficient. Using the mouse will make controlling the DVR very similar to using a computer. It will allow you to easily click on items to select them and make desired changes.

1. Left-button:

In live view, while in a split-screen display mode, double-click an individual channel to view it in full-screen. Double-click again to return to the split-screen display mode.

While navigating menus, click to open a menu option.

2. Right-button:

During live view, right-click anywhere on the screen to open the Quick Menu.

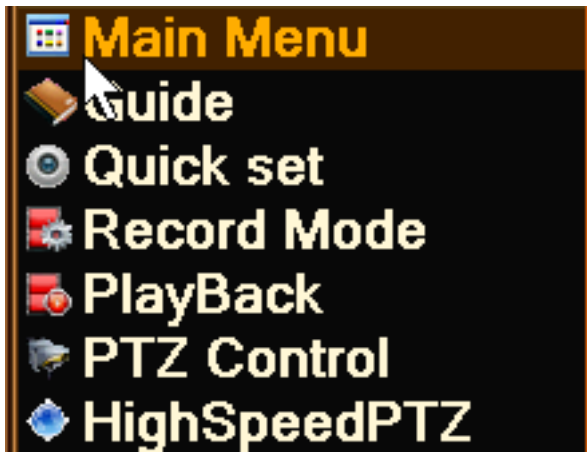
Within system menus, right-click to exit menus.

3. Scroll wheel: In live view, use the scroll wheel to switch individual channel in full-screen



Unlock navigating menus

1. During live view, right-click anywhere on the screen, a quick menu pop up, select the Main Menu.



2. Move the mouse grid next to password, click it, a digital pad will appear.



NOTE: click “abc” icon will change the case.

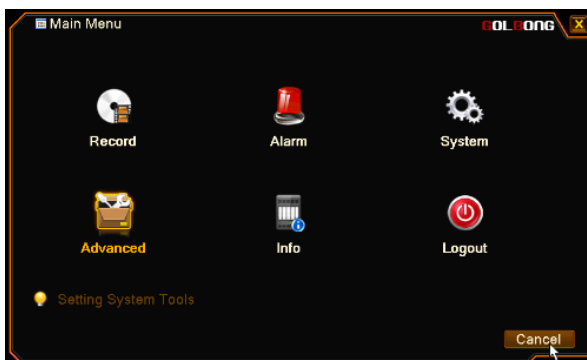
3. Key in the password. The default password is blank (no need).

NOTE: The default password is “blank” (no need)

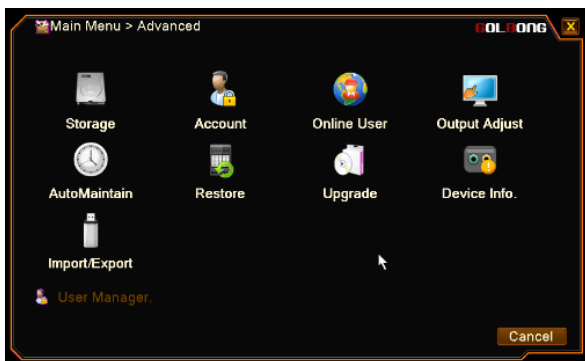
4. Once you have typed in the password, press the “Enter” key to close the digital number pad.
5. Click “OK” to enter the main menu.

Change the password of NVR

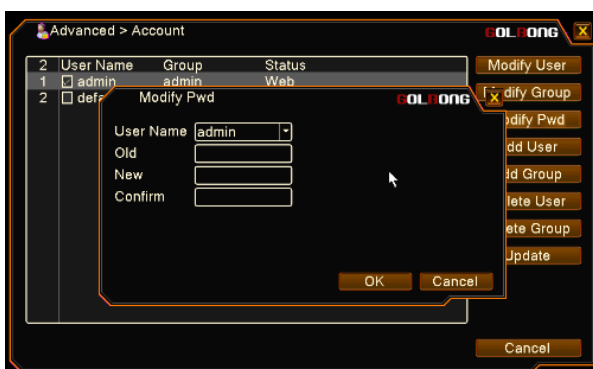
1. Enter the main menu, click “Advanced” , enter sub-menu.



2. Click "Account" icon 



3. Mark the checkbox in front of "admin", click "Modify Pwd" button on the right side.
4. Fill in the old password and new password.

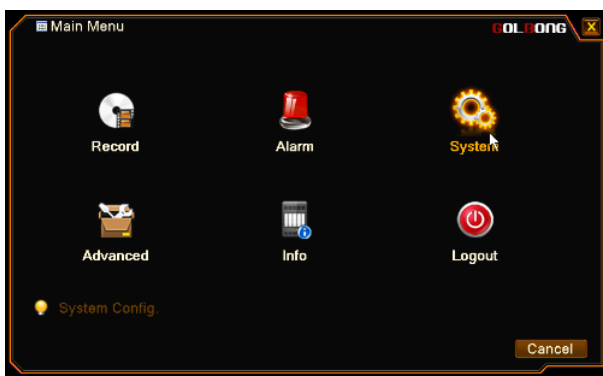


NOTE: The password is blank in default (no password)

NOTE: You add operator with button "Add User"

NVR/DVR Network Setting

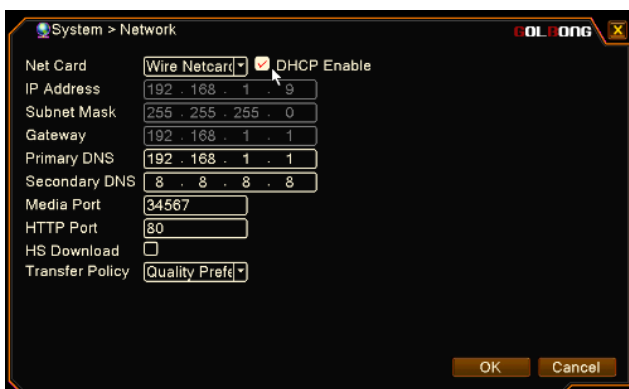
1. Enter the main menu, click "System", enter sub-menu.



2. Click Network icon

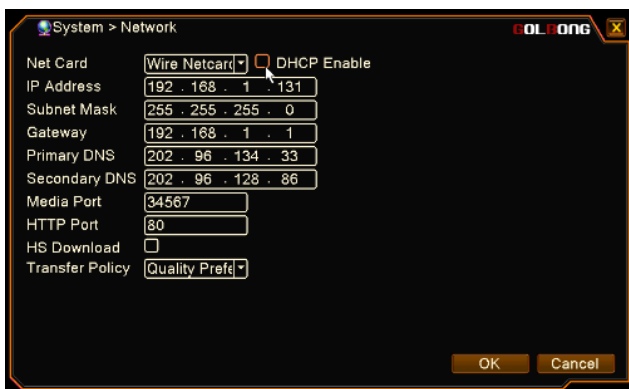


2. Fill in the IP address, or Mark the checkbox in front of “DHCP enable”. Return to main menu, click Logout to reboot the NVR



IMPORTANT: Require NVR reboot to receive the correct network setting from your local network

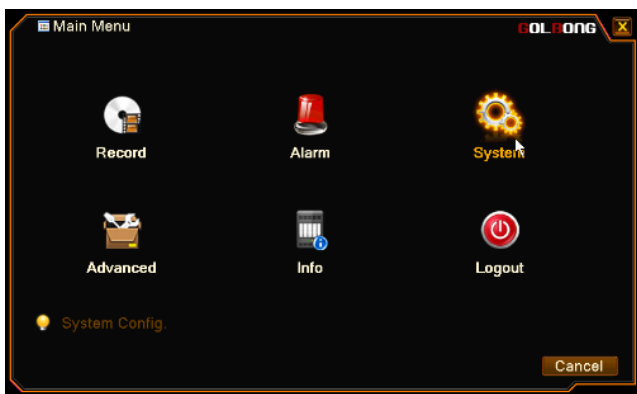
3. Uncheck the DHCP enable to fix the IP address for the recorder.



IMPORTANT: Without setting DNS correctly, the email notification and cloud connection could be not working properly. DHCP operation could make sure the recorder can receive the correct IP setting from your local network.

Setting the time

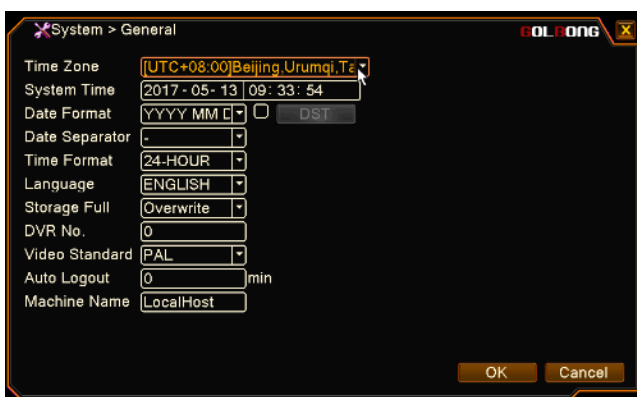
1. Enter the main menu, click “System”, enter sub-menu.



2. Click "General" icon



3. Select the correct time zone, fill in the "system time", click OK to save.



Important: The footage search may not working correct without correct system time.

NOTE: The password recover require system time to generate the code.

Connect the IP cameras to recorder

a. Auto Connection - Quick Set:

1. Right-click and select "Quick Set".



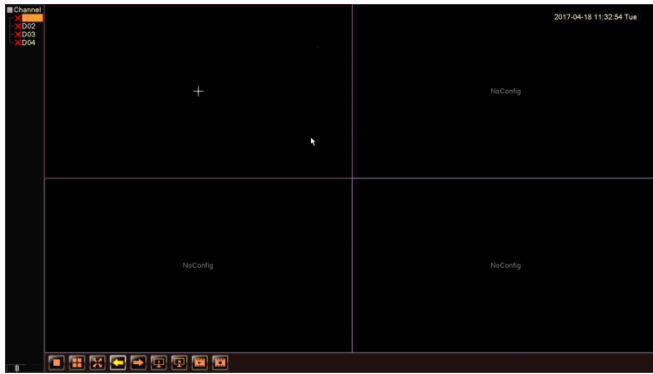
2. The NVR connects to your camera automatically. Click “Apply” to confirm.



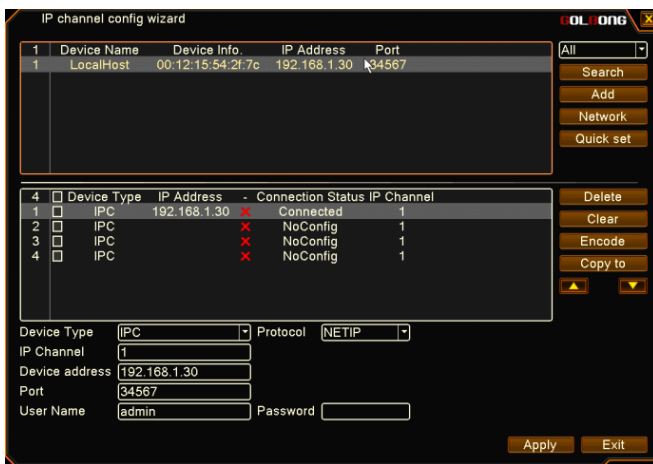
NOTE: Input the username and password at the bottom of the dialog box if it requires. The default password is not required.

b. Add the camera manually


1. Move your mouse to the channel. The icon “+” appear in the middle of the channel.




2. Click the “+” icon to search online devices.
3. Double-click the camera in the list. It becomes highlighted and appears on the below list. When “Connection Status” change to “Connected”. Click “Apply”.

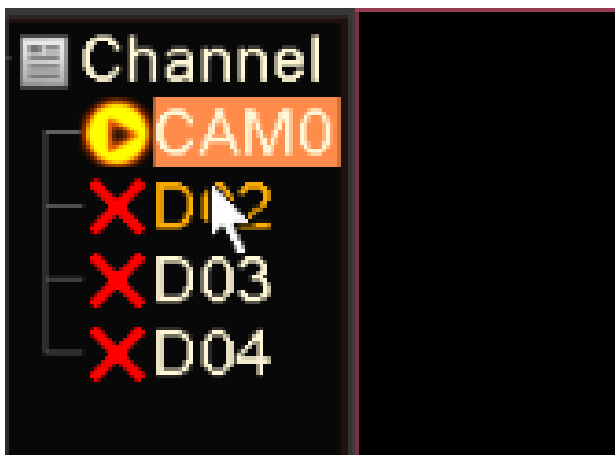



IMPORTANT: Insert the username and password at the bottom of the dialog box if it requires.

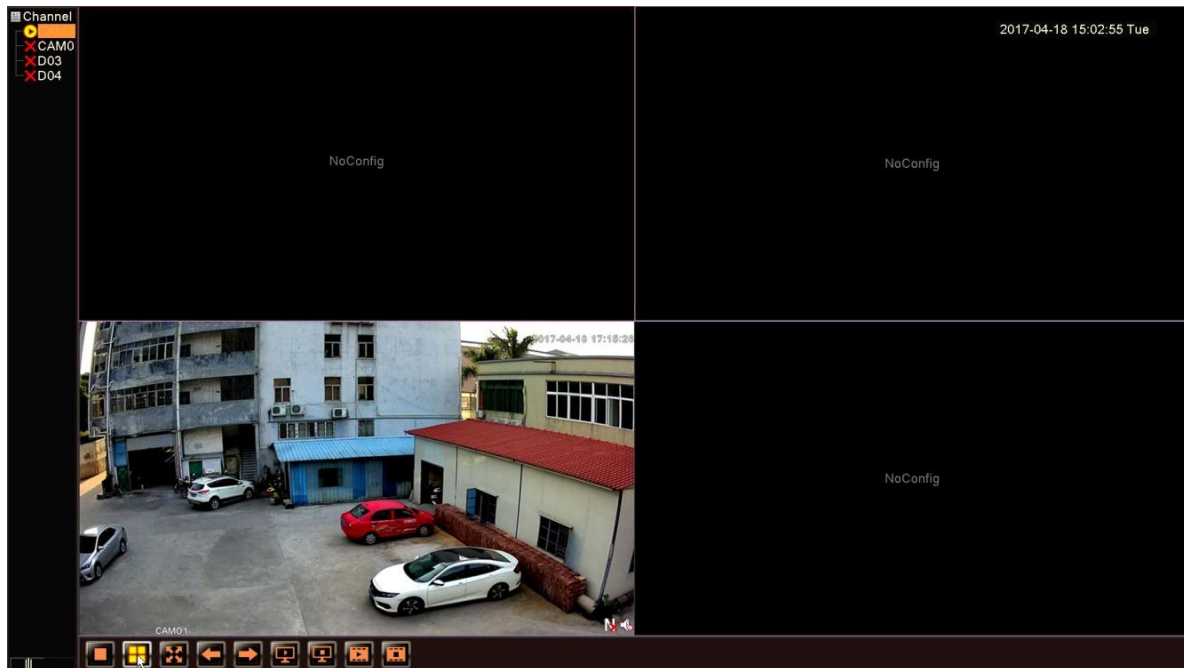
NOTE: You can click the red cross icon  to delete the added cameras

Get the live

1. Single channel: Click the icon  or double-click the channel name in the list.



2. 4-channel: Click the icon  at the bottom of the screen. You can long-press the camera and drag the camera to one of the four channel position.

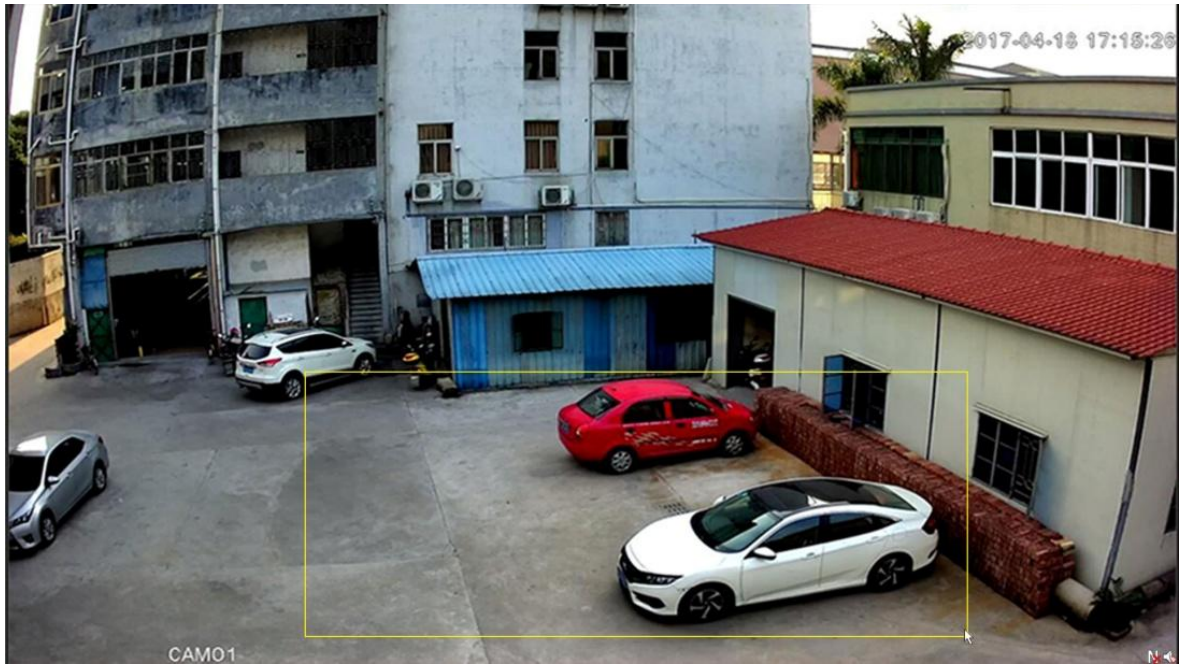


3. Full Screen: Right-click and select "Full Screen".



4. Leave Full Screen: Under full screen mode, double-click the screen or right-click and select "Leave Full Screen".


5. Digital Zoom: Left-click your mouse and draw a yellow square to the targeted area. Move your mouse to the targeted area and a magnifier icon appears. Click the area. The picture is enlarged. Double-click to get back to the original screen

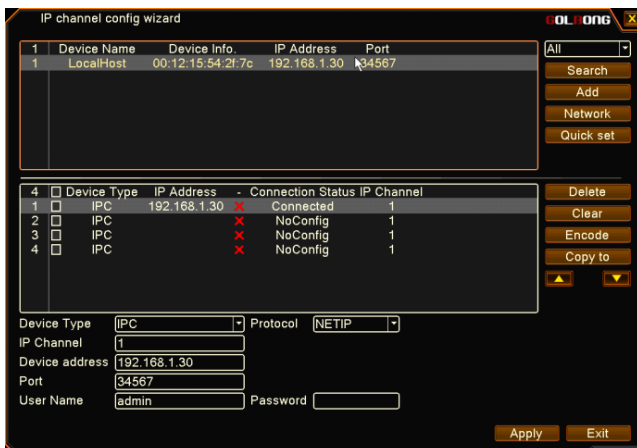


Set camera video quality

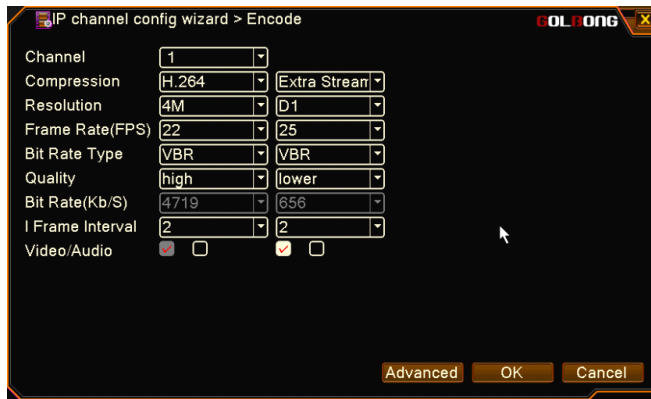
1. Click the icon  at the main screen.



2. Click the camera and it becomes highlighted. Click “Encode” button  on the right side.



3. Configure sub stream in the left column and extra stream in the right.

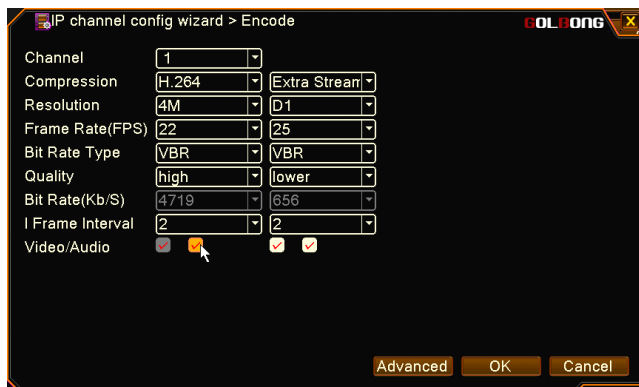


NOTE: Resolution - Main stream-preview HD/SD , and it affects the viewing quality of the video. Sub stream is more suitable for remote viewing, it can save bandwidth.

NOTE: Frame Rate - Frame per seconds. User can select the value of the frame rate, the bigger the value, the better the video fluency.



Optional: How to activate the audio in your NVR

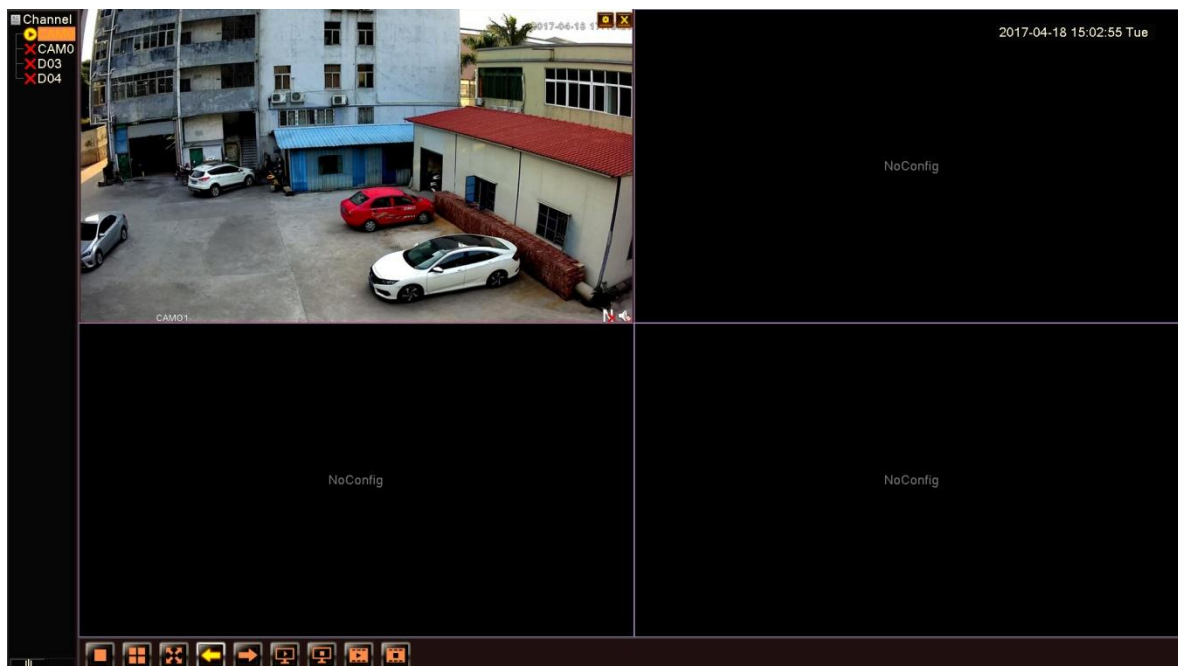
1. Mark the right checkbox at the bottom of the columns.



NOTE: Your camera must support audio and connects to audio pick up.

NOTE: The recorder should connect to speaker or amplify.

2 . Get back to the monitor screen. The speaker icon  means silent mode. Click to activate it .




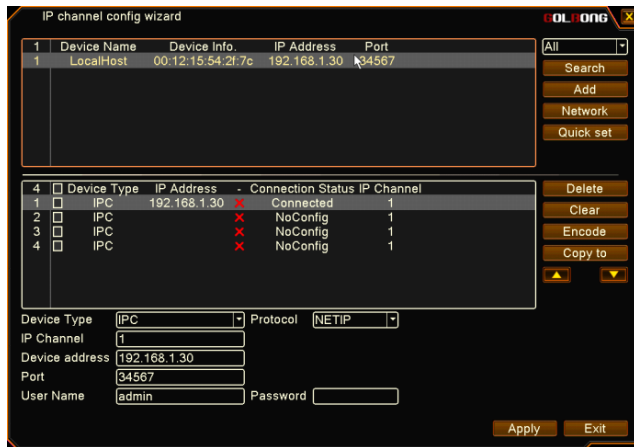
Optional: Change the IP address of the camera from NVR.

1. Click the icon  at the main screen.

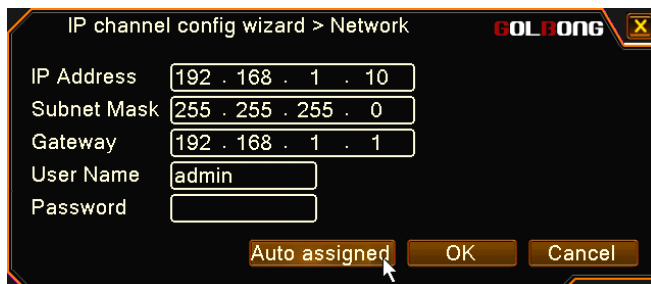


NOTE: You can click the cross icon  to delete channels directly.

2. Click the camera and it becomes highlighted. Click “Network” button  on the right side.




3. Press “Auto assigned”. The recorder will assign static IP address to your IP camera automatically.

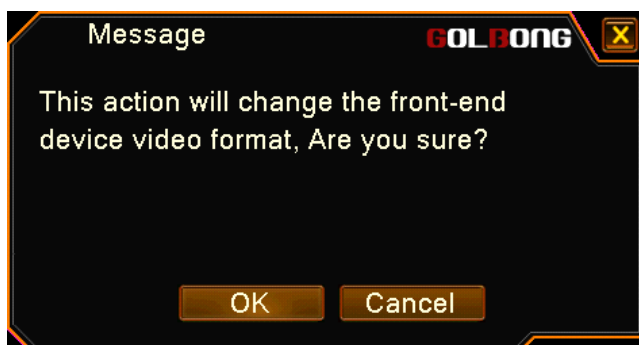


IMPORTANT: Input the camera’s password if it requires.

Optional: Switch PAL/NTSC at front-end device video format

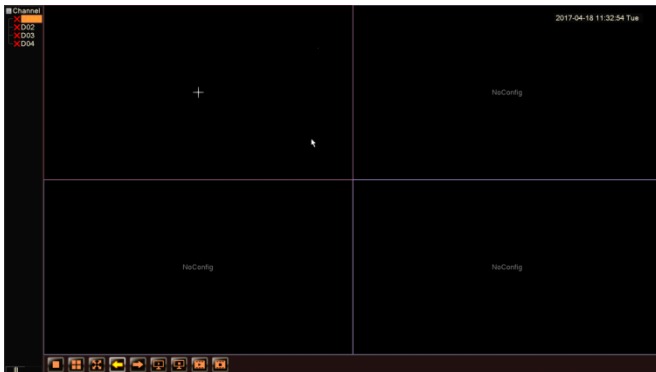
If your device video format makes conflicts with your recorder, the icon  appears.

Double-click the icon and a message pops up. Click “OK”. The front-end video format becomes consistent with your NVR.

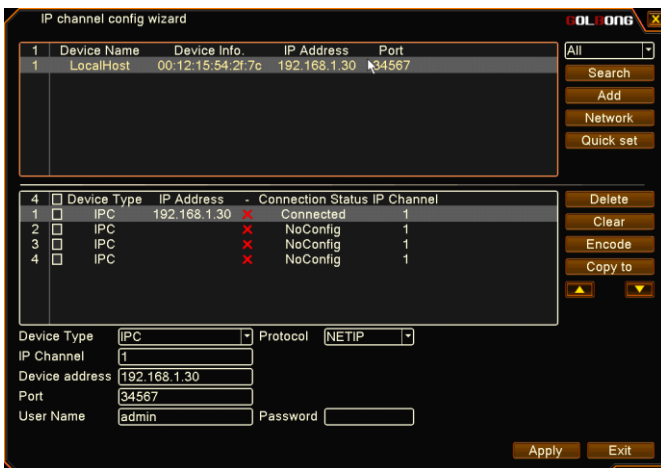


Connect an ONVIF IP camera

1. Move the mouse to the one channel. The icon “+” appear in the middle of the channel.



2. Click the “+” icon to search online devices. Double-click the camera in the list. It becomes highlighted and appears on the below list. Select the Onvif from the “Protocol” list.



IMPORTANT: Insert the username and password at the bottom of the dialog box if it requires.

NOTE: You can click the Red cross icon  to delete the added cameras

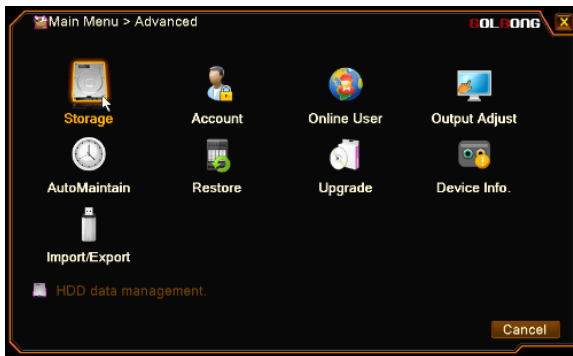
3. Click “Apply” to Save

Recording the video

Install the hard drive to the recorder

The record require hard drive installed to record the footage. The first time reboot after hard drive is installed, The recorder will pop up the message, click "OK" to format the hard drive. Also we can login the main menu and format the hard drive manually.

1. Enter the “Main Menu”, click icon Advanced, enter Storage



2. Select the hard drive from the list, Click “Format storage”, click OK to format the hard drive.

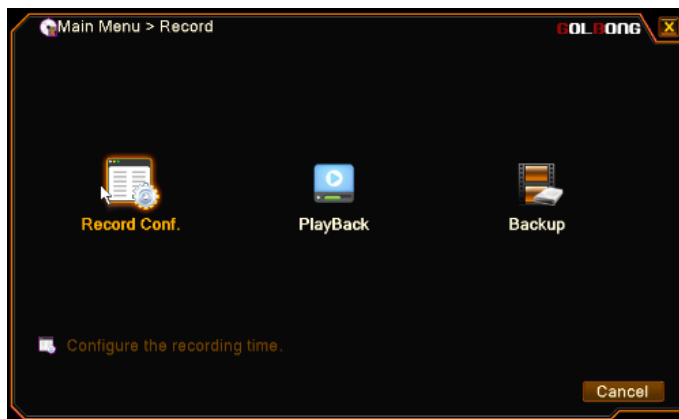


IMPORTANT: All the data will be erased after hard drive is formatted.

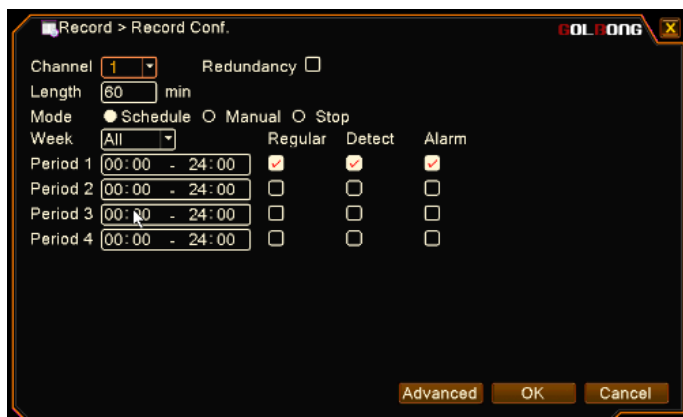
NOTE: Storage information is available only after hard drive is installed successfully

Configure the recording

1. Enter the “Main menu”, Click icon Record, Enter “Record Confi.”




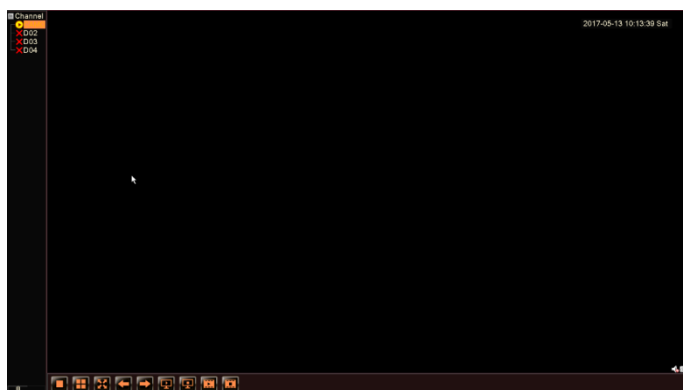
2. Check the “Regular”, “Detect”, “Alarm”



NOTE: uncheck “Regular” will only record the video with motion and alarm

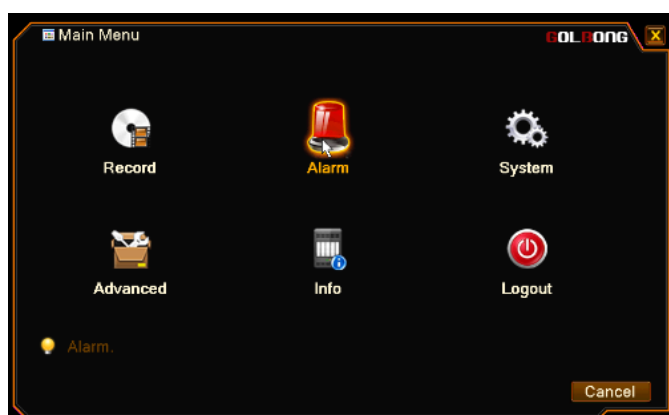
NOTE: You can customized the recording schedule or use the default setting

NOTE: You can see the tape icon  on each channel once the recording is activated



Enable the motion recording

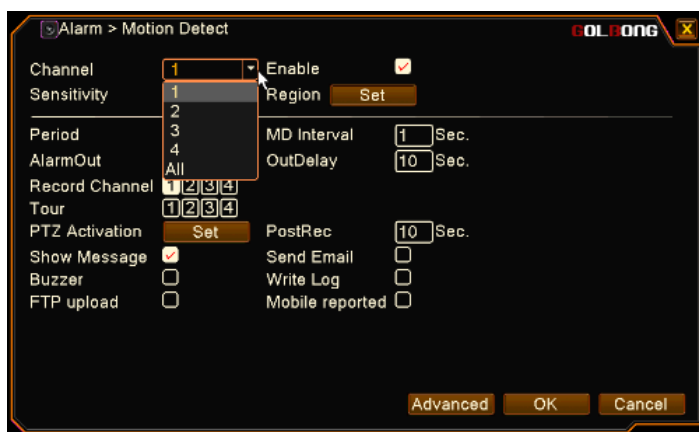
1. Enter the “Main menu”, Click “Alarm”



2. Click “Motion Detect”

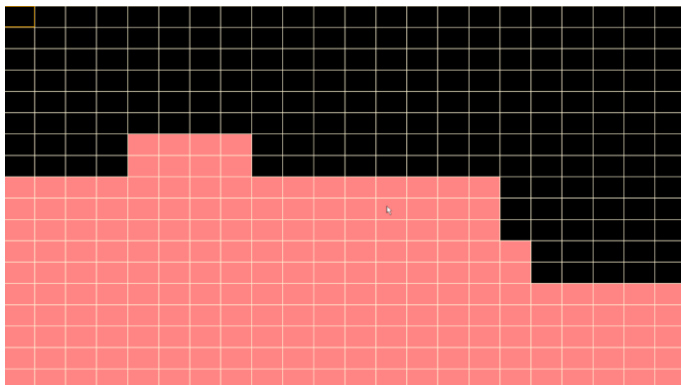


3. Check “Enable” to turn on motion detection. Select the Channel to configure the motion recording



NOTE: Choose “All” will apply the setting to all the cameras

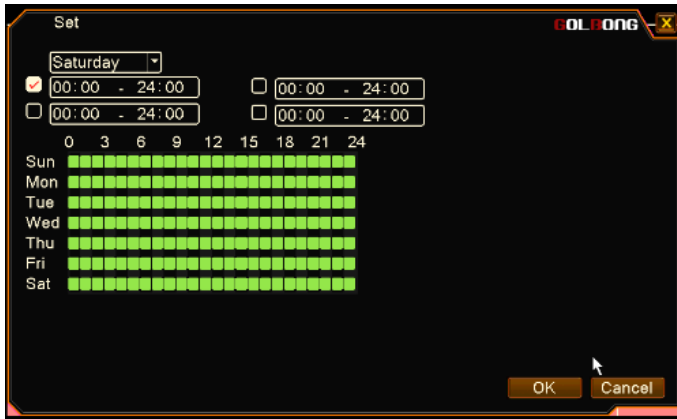
4. Click “Set” next to Region to select the area for motion detection.



NOTE: The red block is the selected area for motion detection.

NOTE: Specify the area for motion detection can reduce the false alarm.

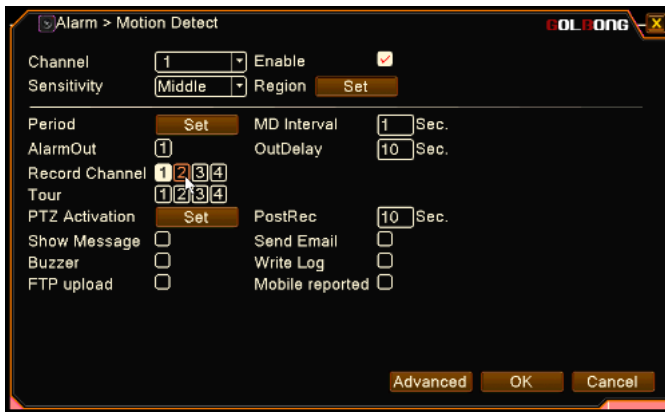
5. Click “Set” next to Period can customize the schedule to active the motion detection.



6. Pick a lead time for “MD interval”

NOTE: If the camera generates too much motion on the scene, pick a longer lead can ignore some motion.

7. Select the “Record Channel”.



NOTE: on one channel pick up alarm can initial the recording on the rest of other channels.

8. Set how long keep recording after the motion is detected on “PostRec”

NOTE: only the IPC with on-board storage can have pre-recording function.

9. Click OK to save

NOTE: the Onvif cameras require motion detection setting on the IP camera.

Optional: Enable external alarm recording

Only there are external alarm devices such as door contact, PIR sensor connecting to the ip camera can trigger alarm recording.

1. Enter the “Main menu”, Click Alarm, enter “Alarm input”



2. Check “Enable” to turn on external alarm input.

3. Select the Channel to configure the alarm recording

NOTE: Choose “All” will apply the setting to all the cameras

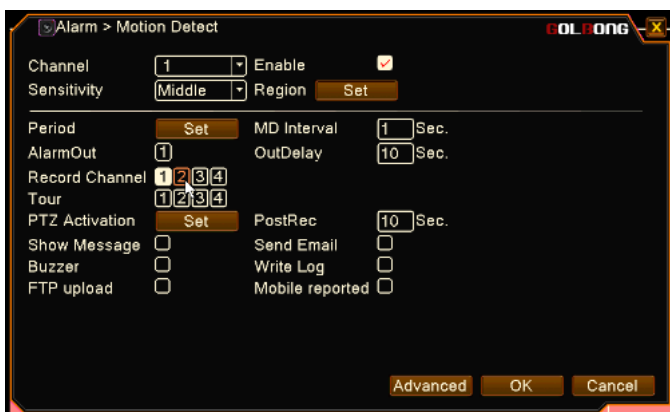
4. Select IPC alarm from the “Type”, Select alarm type from normal close and normal open.



5. Click “Set” next to Period can customize the schedule to activate the alarm input.

6. Pick a lead time for “MD interval”.

7. Select the “Record Channel”.



NOTE: alarm pick-up one channel can initial the recording on other channels.

8. Set how long keep recording after the motion is detected on “PostRec”

NOTE: only the IPC with on-board storage can have pre-recording function.

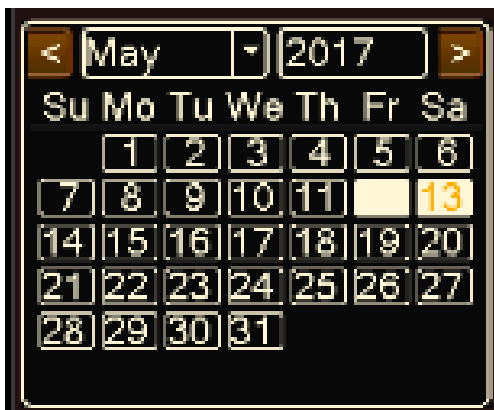
9. Click OK to save

Playback the footage

1. Right click on screen with mouse, select “Playback” to enter playback screen.



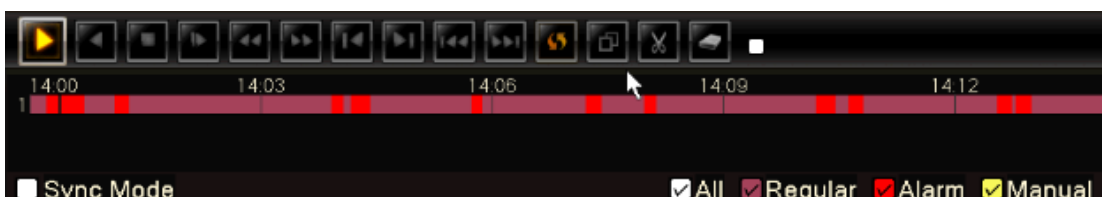
2. Select the date from calander



2. Select the channel on the left down on screen, search result will appear on the time line



3. Click the time line to select the footage to play



NOTE: Use scroll wheel on mouse can zoom in/zoom out the timeline. Hold the left mouse button can move timeline.

NOTE: Click Sync Mode can playback multi-channel with same time frame. Sync playback only will start if all the channels you selected have footage. Otherwise unselect the channel without footage.

NOTE: The red block is the footage with motion detection.

4. Click Play button again to pause the video. Click button to play the video frame by frame



NOTE: You need to pause the playback in order to play the footage frame by frame.

5. Double click on screen will enter full screen playback. Double click again to exit the full screen.
6. Drag a area on screen to digital zoom.



NOTE: If you want to zoom with frame by frame playback, pause the video and digital zoom.

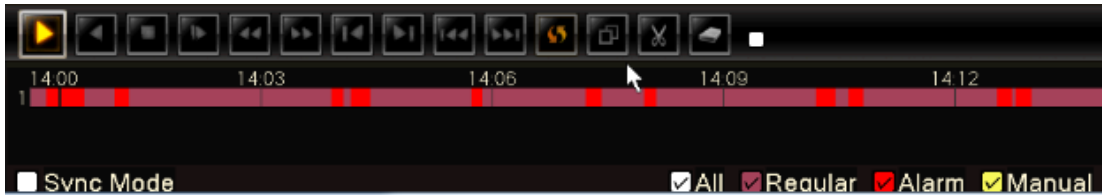
Instant playback (Only available with rack mount NVR)

1. Right click on screen with mouse, find the “Instantsingle” and select the time frame to playback.
2. Right click on screen with mouse, find the “Instantmul” to playback multi-channel.


NOTE: Multi channel instant playback only will start if all the channels have footage.

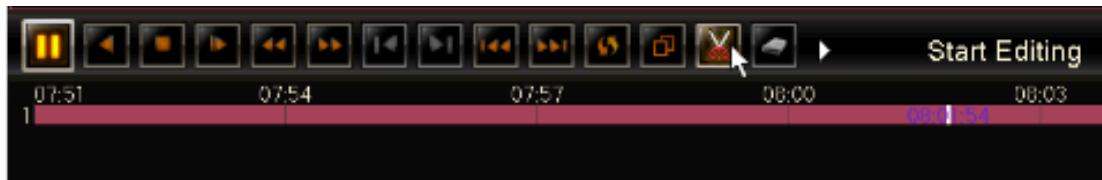
Backup the footage to USB thumb drive

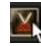
1. Right click on screen with mouse, select “Playback” to enter playback screen.
2. Click the time line to select the footage to play



NOTE: Use scroll wheel on mouse can zoom in/zoom out the timeline. Hold the left mouse button can move timeline.

3. Mouse click on the time line to select the beginning point, click  icon to confirm

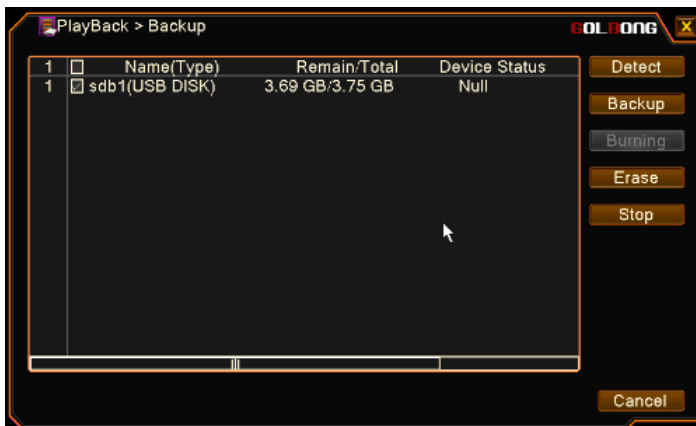


4. Mouse click on the time line to select the ending point, click icon  to confirm

5. Click the disk icon  to enter back up screen

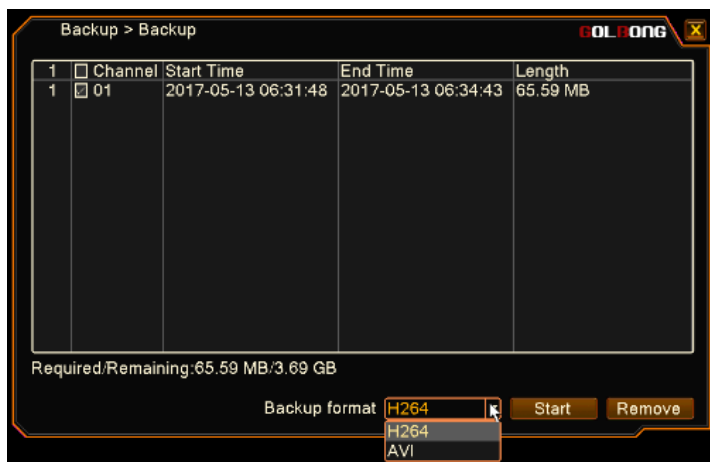


6. Select the USB disk, click the Backup button on the right side.



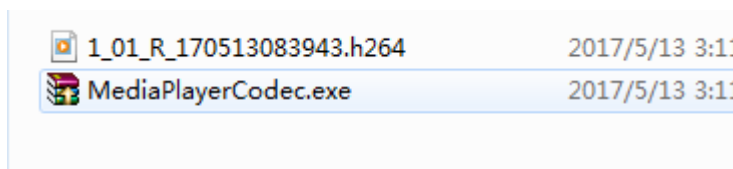
NOTE: you can erase all the data in the USB drive by with “Erase” button.

7. Mark the checkbox to select the footage selected from previous steps.
8. Choose backup format, click “Start” to process the backup.



NOTE: AVI format could require longer time to backup to USB driver. H264 format may require media codec installed even player in the windows PC to view the footage.

9. Plus the USB drive to windows PC. Backup to H264 format will come with MediaPlayerCode.exe. Install the MediaPlayerCode if necessary.



NOTE: You can convert H264 files to AVI format with CMS5 software.

Email Notification

Set up the email account

1. In live page, Enter "Main menu", click icon "System", Enter "NetService"



2. Click "Email", check the Enable



3. Fill in the SMTP server and Port



NOTE: Use port 465 for "SSL" connection.

5. Fill in UserName, Password, Sender, Recipient, email Subject:

NOTE: The username and sender are full email account, such as abc@gmail.com

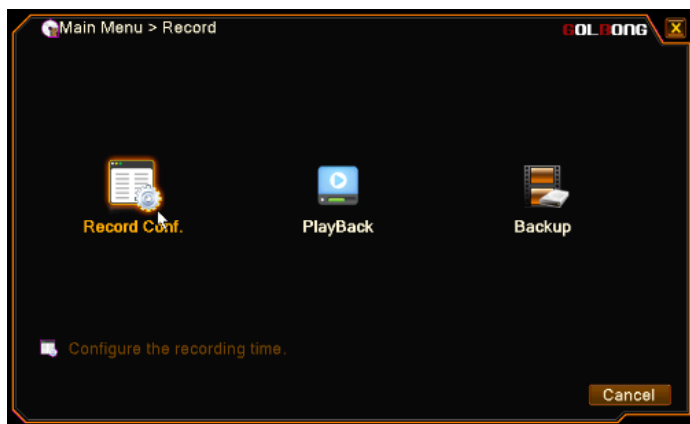
6. Click the "Mail Testing".

NOTE: The system may still show "failed" even the email setting has been done correctly. If you are sure about your email setting, just ignore the warning message.

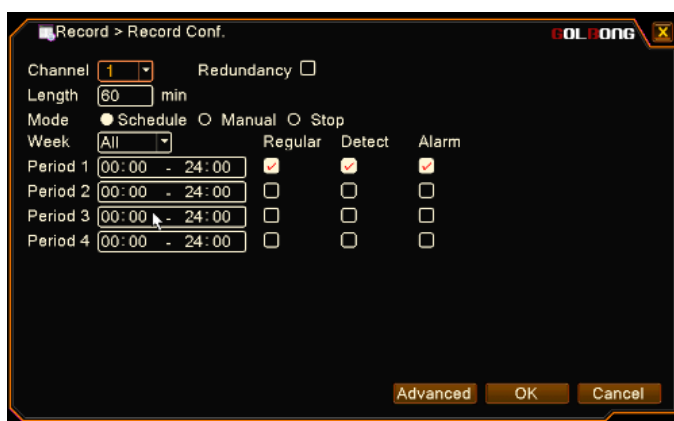
Important: The DNS setting should be correct in order to send a notification email. Enable DHCP can receive the correct network setting from the local network.

Check the recording configuration

1. In live page, Enter "Main menu", click icon "Record", Enter "Record Config"



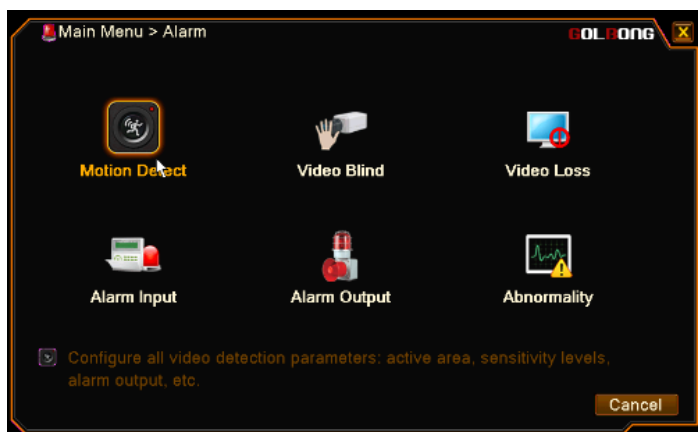
2. Make sure checkbox “Detect” is marked.



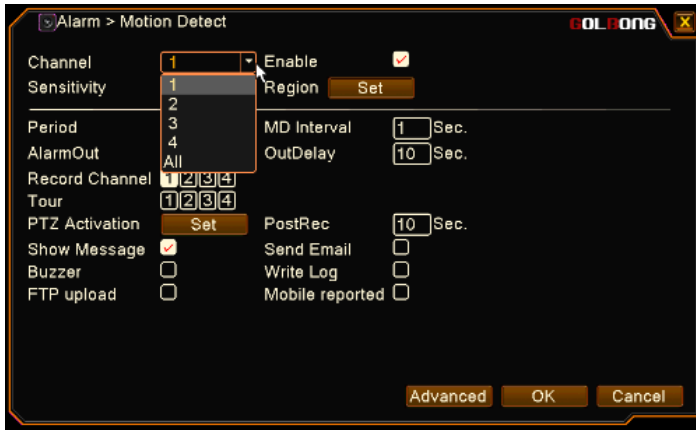
NOTE: Uncheck “Regular” will only record the footage with motion.

Enable motion detection with email notification.

1. In live page, Enter the “Main menu”, Click “Alarm”, Enter “Motion Detect”

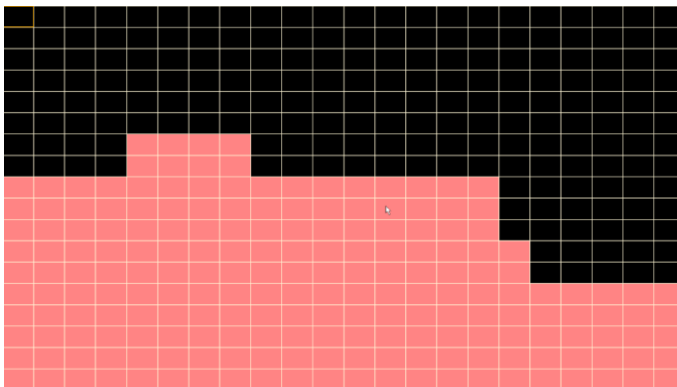


3. Check “Enable” to turn on motion detection. Select the Channel to configure the motion email notification



NOTE: Choose “All” will apply the setting to all the cameras

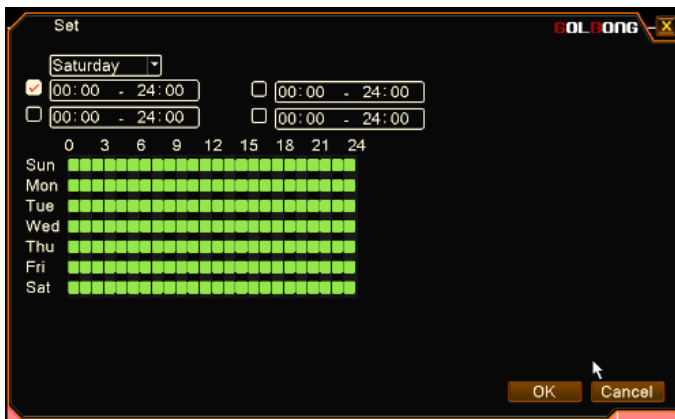
4. Click “Set” next to Region to select the area for motion detection.



NOTE: The red block is the selected area for motion detection.

NOTE: Specify the area for motion detection can reduce the false alarm.

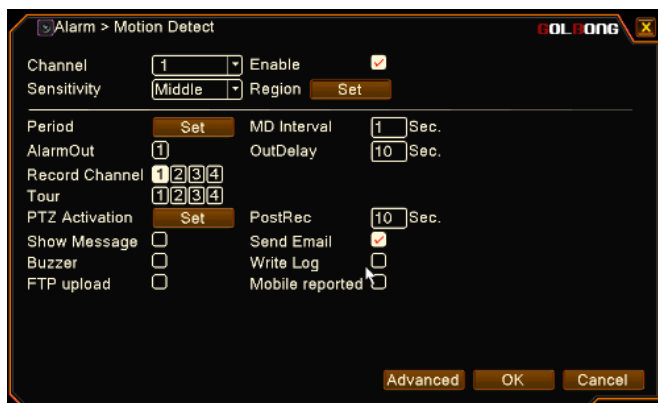
5. Click “Set” next to Period can customize the schedule to active the motion detection.



6. Pick a lead time for “MD interval”

NOTE: If the camera generates too much motion on the scene, pick a longer lead can ignore some motion.

7. Mark the “Send email”. Click OK to save

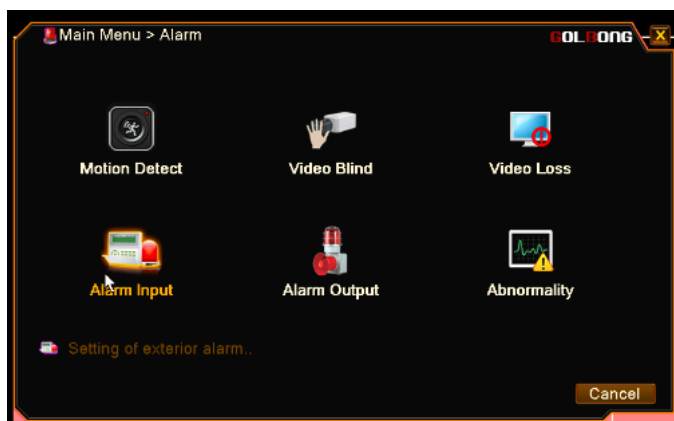


NOTE: the Onvif cameras require motion detection setting on the IP camera.

Optional: Enable external alarm email notification

Only there are external alarm devices such as door contact, PIR sensor connecting to the ip camera can trigger alarm email notification.

1. Enter the “Main menu”, Click Alarm, enter “Alarm input”



2. Check “Enable” to turn on external alarm input.

3. Select the Channel to configure the alarm notification

NOTE: Choose “All” will apply the setting to all the cameras

4. Select IPC alarm from the “Type”, Select alarm type from normal close and normal open.



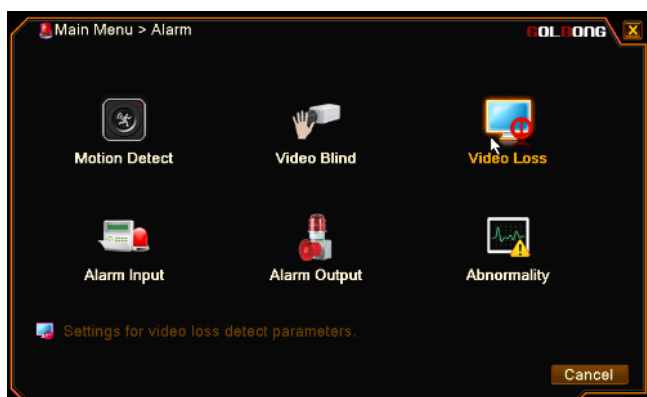
5. Click “Set” next to Period can customize the schedule to activate the alarm input.
6. Pick a lead time for “MD interval”.
7. Mark the “Send email”. Click OK to save



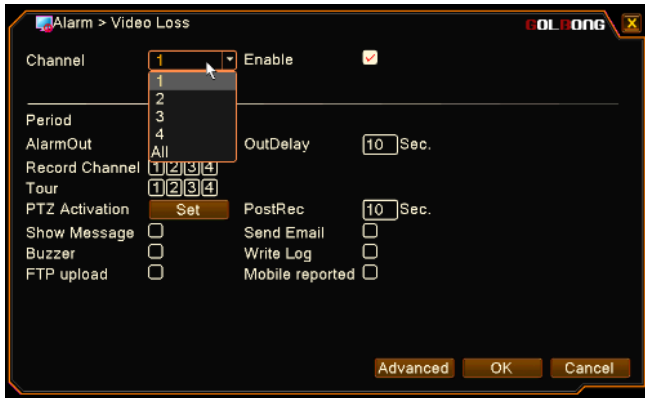
NOTE: onvif camera doesn't support IPC alarm input.

Enable video loss email notification

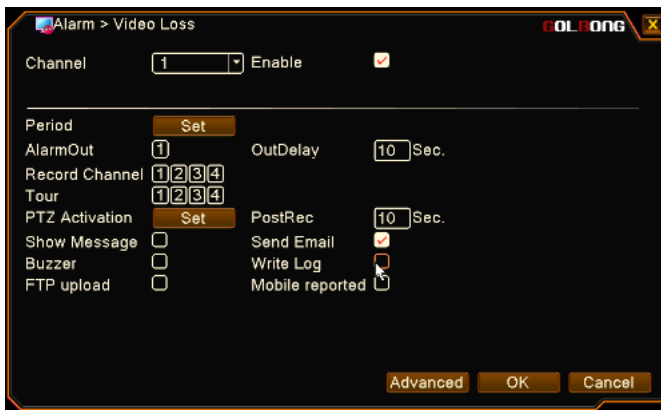
1. In the live page, Enter the “main menu”, click alarm, Enter “Video loss”



2. Check “Enable”, Select the channel to configure video loss

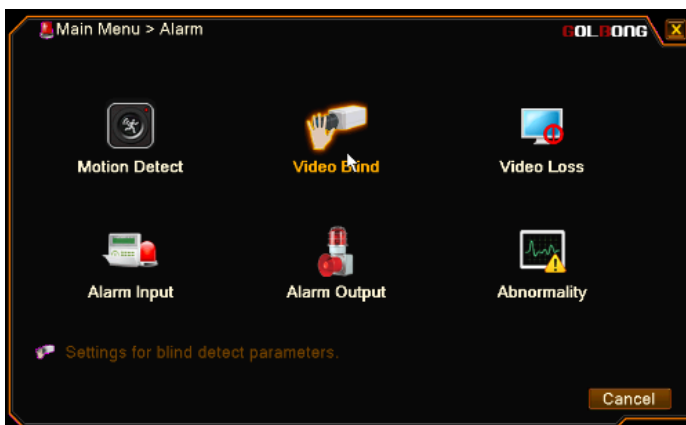


3. Check the “Send Email”, Click OK to save.

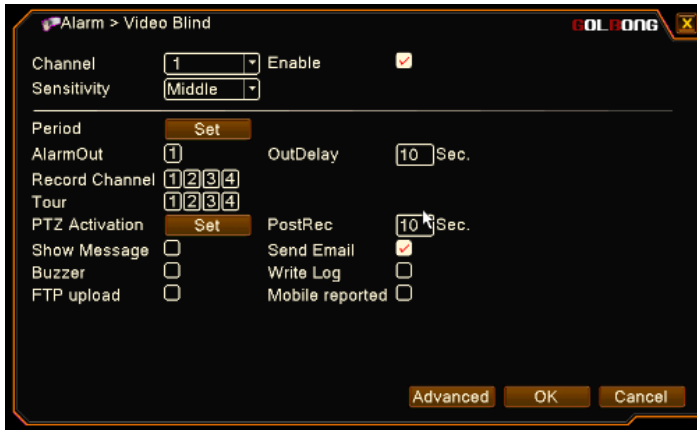


Enable video blind email notification

1. In live page, Enter the “main menu”, click alarm, Enter “Video Blind”



2. Check “Enable”, Select the channel to configure video blind
3. Check the “Send Email”, Click OK to save.



Enable disk failed notification.

1. In the live, Enter the “main menu”, click alarm, Enter “Abnormality”



2. Select “No storage” from the event type, Check the enable
3. Check Send email, click OK to save.



Using CMS5 for PC or Mac

System Requirements

CPU	Core 2 Duo 3.0GHz
Operating System	Windows™ 8/7/Vista
Memory	2GB
Video	512 MB of video memory and above
Network (LAN)	10/100 Base-T Network
Network (WAN)	1 Mbps upstream High-speed Internet service is required to remotely connect to your system.

Installing Software

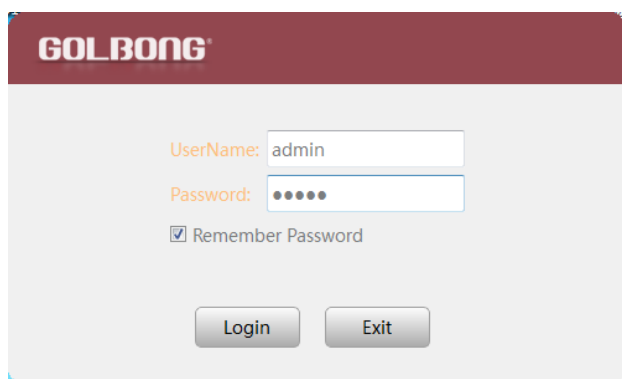
Download the latest version of the windows PC software using the link below.

<https://goo.gl/NHg7C3>

Network connection and settings

Connect to the camera

1. Click icon CMS5, a dialog will appear. Key in the username and password to enter Main console.



GOLBONG

UserName: admin

Password: ●●●●●

Remember Password

Login Exit

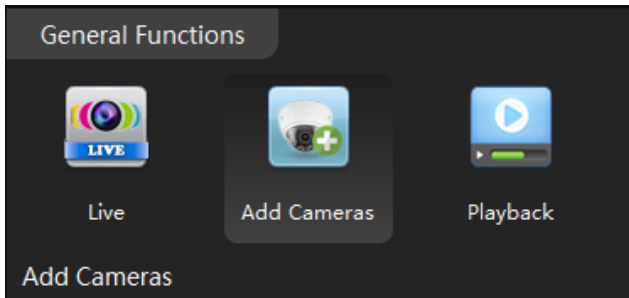
NOTE: The default username and password of the software is “admin”

If you want to revise the login username and password of the software, go to the “Main” click "User Manager"

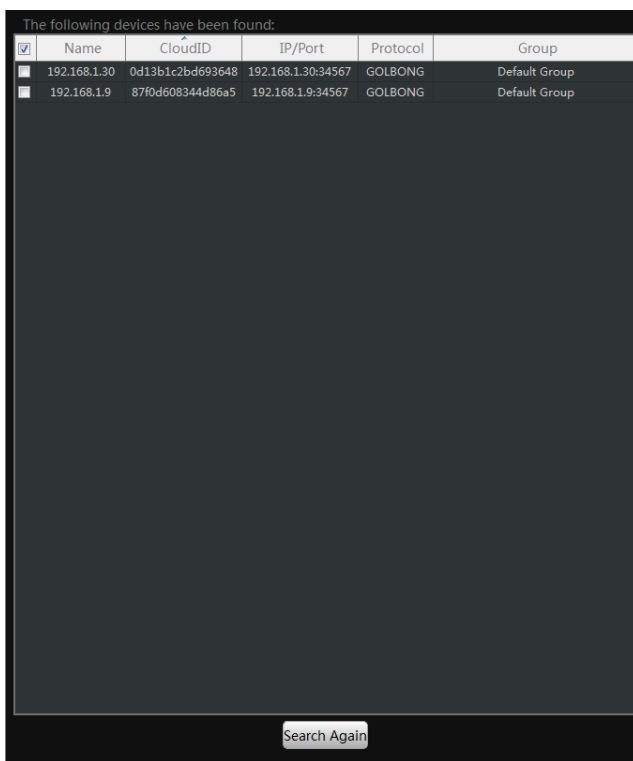


, change the new password.

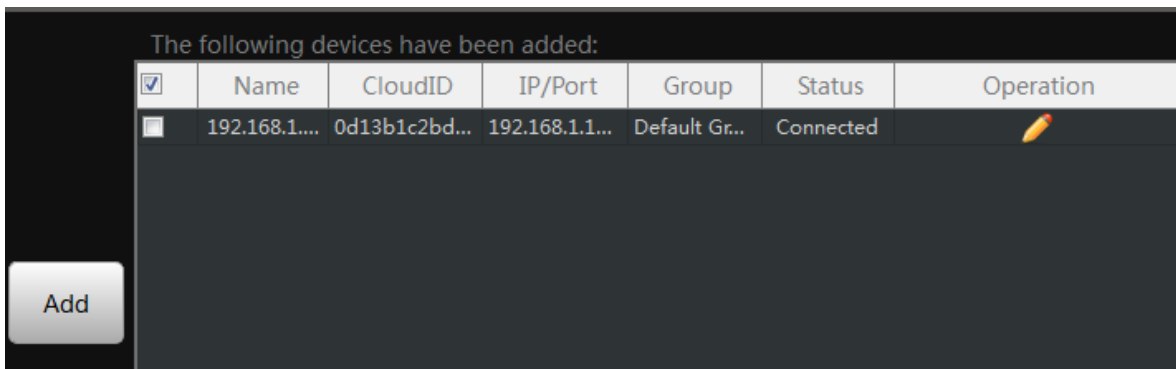
2. In the "Main" , Click “Add Cameras” to enter a new screen.




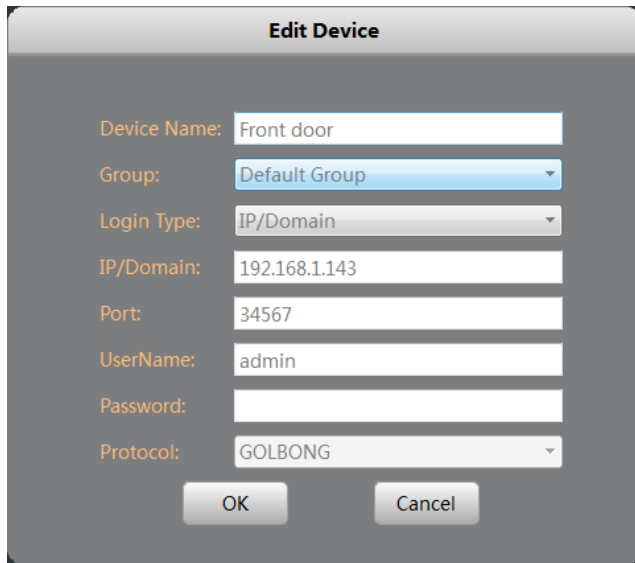
3. Click “IPV4 search” button. The available devices will display on the left screen.



4. Mark the checkbox in front of the IP address, click “Add ” button. The IP camera will move to right.



- Click the pen icon  under “operation”, a new dialog pop up, name the camera, Click “OK” to save.




NOTE: NO password required for camera/NVR in default. You can jump to page-11 to change camera’s password.

NOTE: If you want to access the camera over internet, choose cloudID in “Login Type”

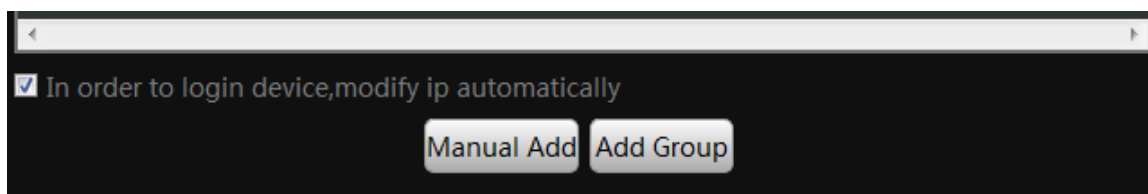
- Once the software has connected the camera successfully, the “Status” will change to “connected”

The following devices have been added:

<input checked="" type="checkbox"/>	Name	CloudID	IP/Port	Group	Status	Operation
<input type="checkbox"/>	192.168.1....	0d13b1c2bd...	192.168.1.1...	Default Gr...	Connected	

Optional 1: What should you do when IP address get conflict?

- Mark the checkbox “In order to login device, modify IP automatically” at the lower right corner.



NOTE: once you mark the checkbox, the software will change the IP camera automatically to avoid the conflicts.

- Return back to step 3. Click “IPV4 search” again. Following step 4 and step 5 until you add all the camera successfully.

Optional 2: How to add the NVRs to CMS5 outside of LAN.

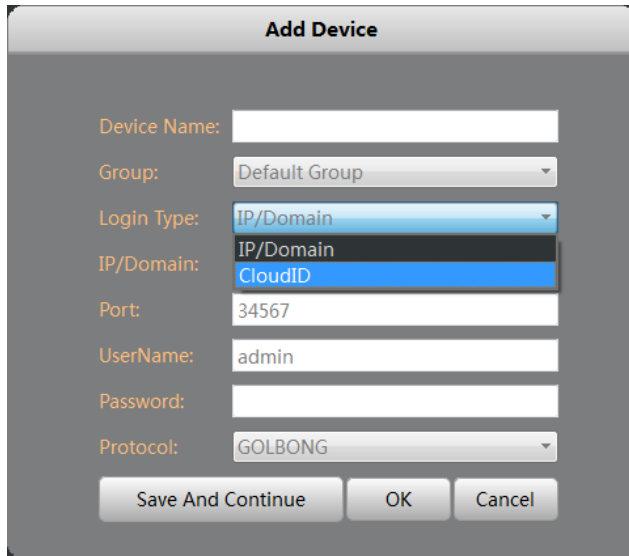
- Click “Manual Add” button at the lower right corner. A new dialog appear.
- Name the camera, Choose the login type.

NOTE: if you didn't configure the port forwarding in your router, you properly need to choose the cloudID in login type.

3. Key in Static IP or cloudID

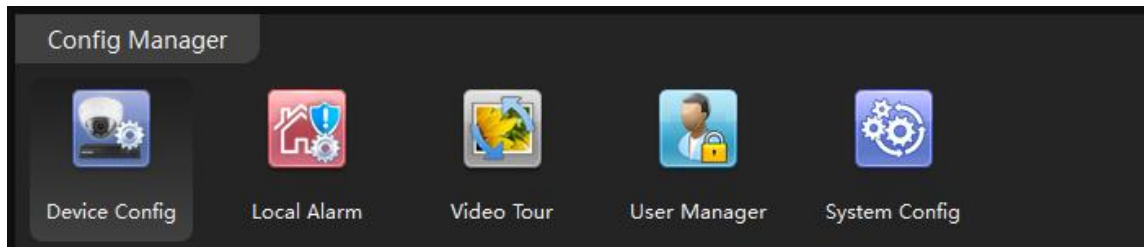
NOTE: You can mark down the cloudID when you connect the camera in the LAN

4. Key in password, and click "OK" to save.



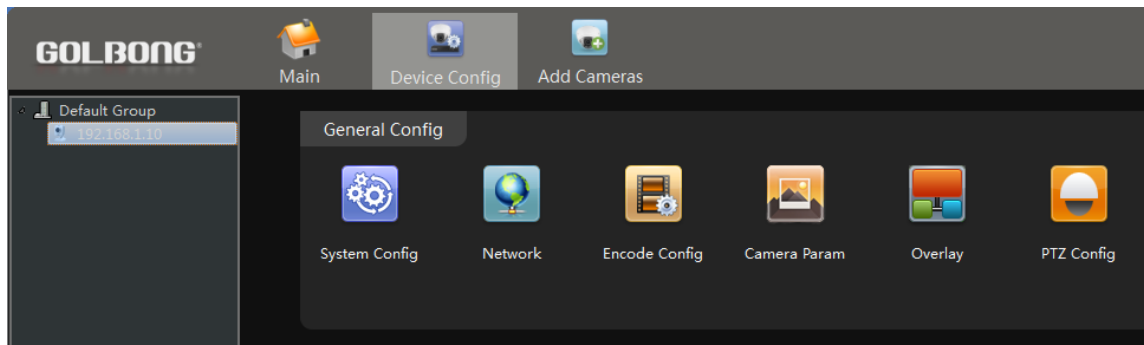
Optional 3: How to Configure the network setting of the NVR manually.

1. In the "Main" , Click "Device Config", a new screen appear.

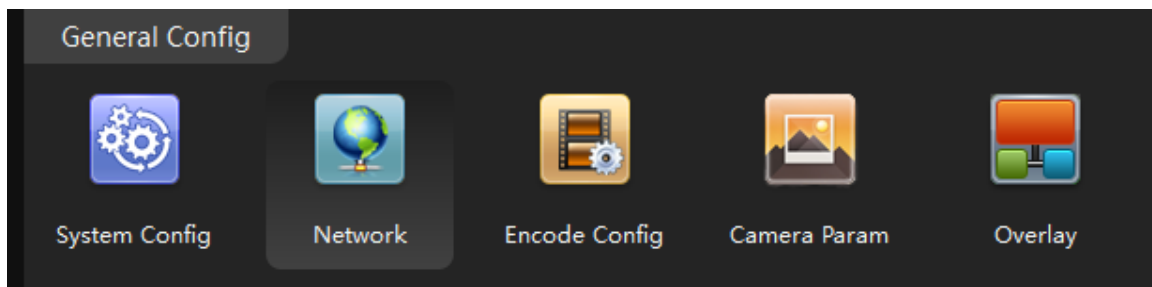


2. Select the camera from the list in the top left. All the icon will be activated with color

NOTE: If the icon remain black/white, check the connection status of your camera.



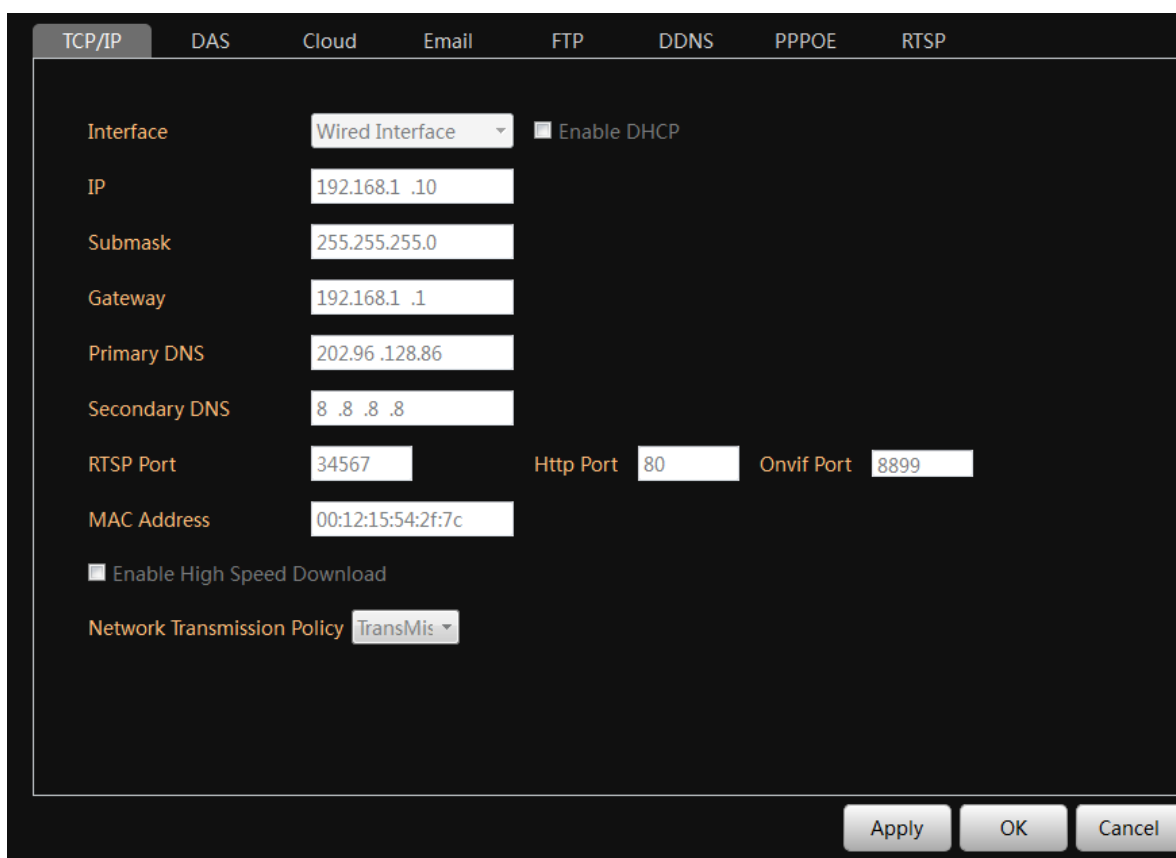
3. Click Network icon, a new screen will appear with "TCP/IP" setting.



4. Modify the IP setting. Click "OK" to save

Important: The DNS should be configured correctly, otherwise the cloud connection and email notification may not be working.

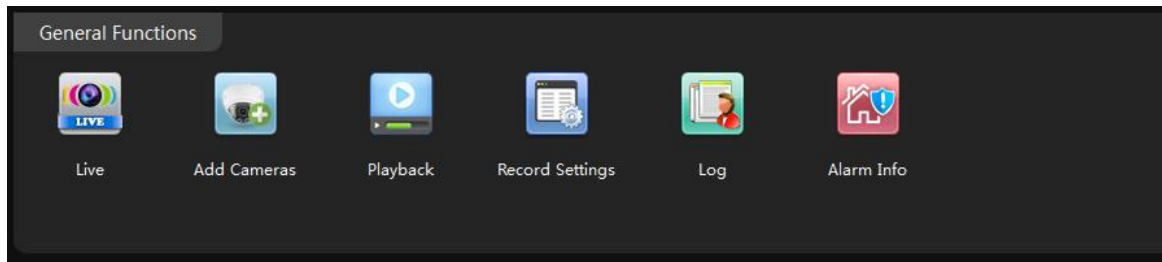
NOTE: If you don't know you network setting, mark "enable DHCP" to receive the IP setting from your local network. Click OK, the IP camera has to reboot to receive the correct IP setting from your local network.



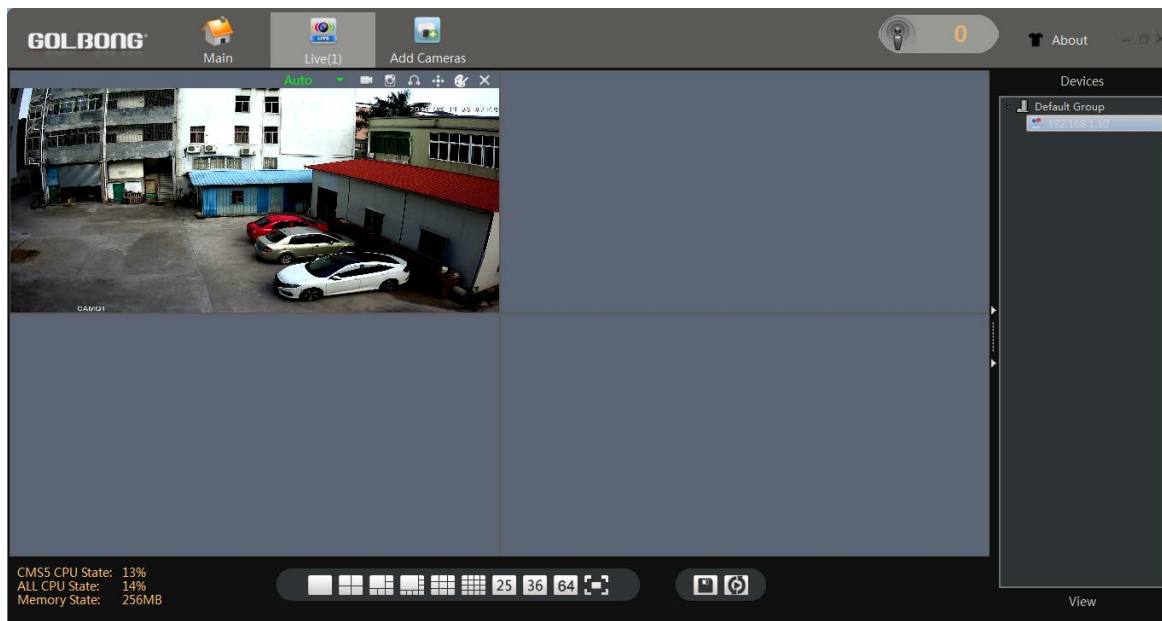
Live Video

Watch the live

1. In the "Main" , Click "Live" icon to enter live view interface.



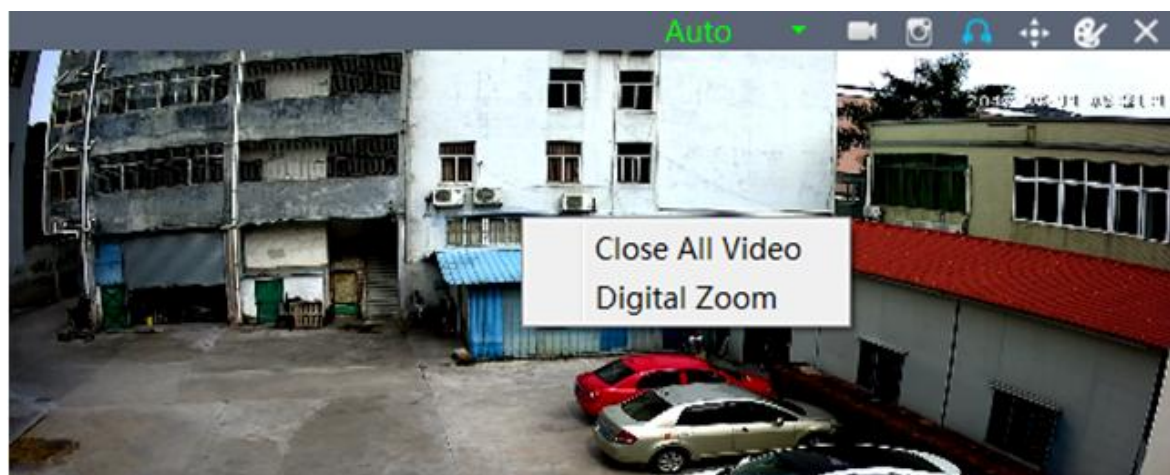
2. Double click the camera in the devices list. CMS5 will start receiving the live.



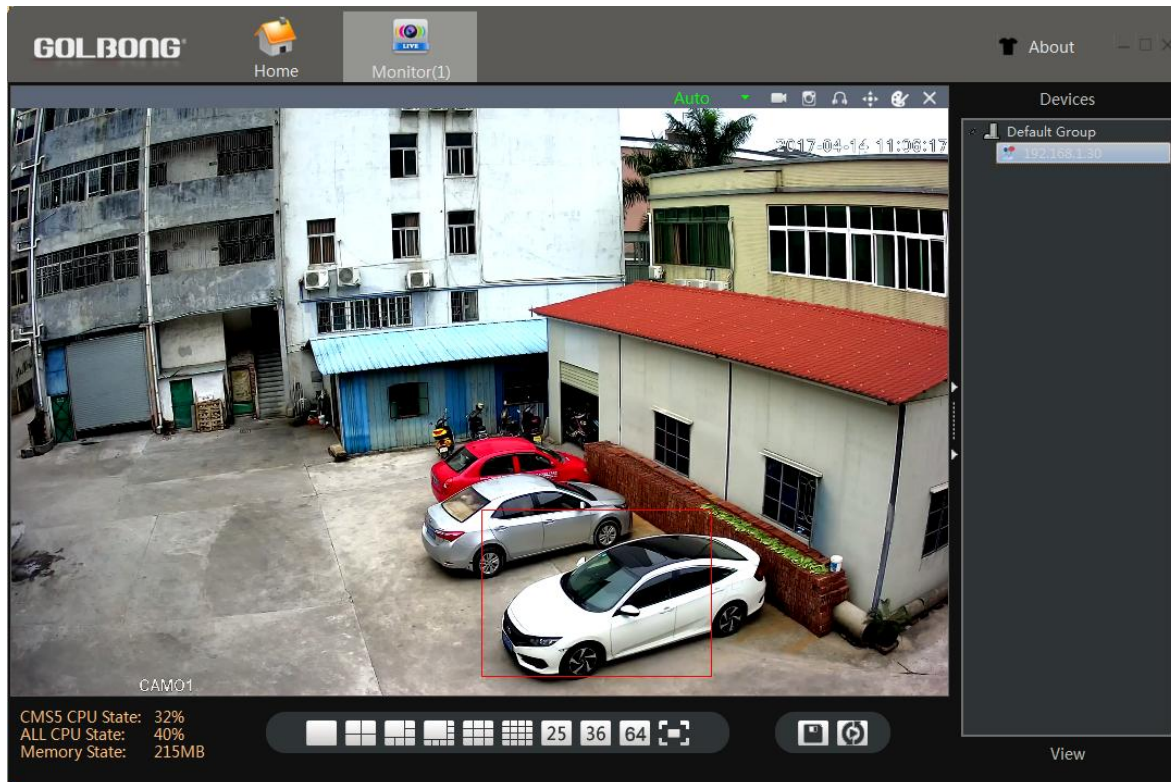
NOTE: Double click the name again can close the video.

Digital ZOOM

1. Right the video you want to operate digital zoom on the screen, select "Digital Zoom"



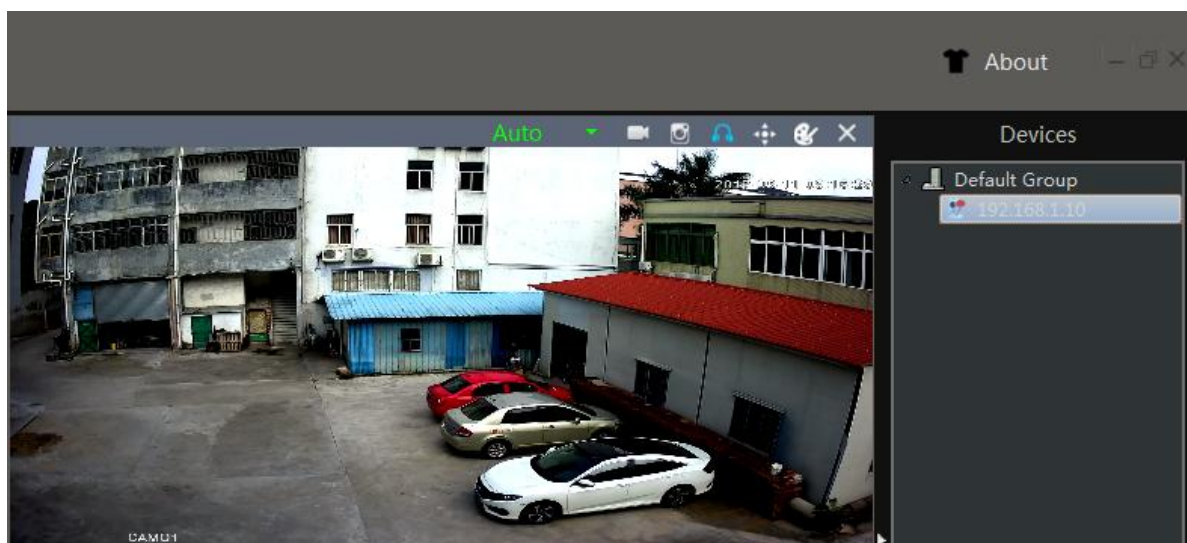
2. Hold the left-button on mouse to selected area in red square. As shown below:



3. Release the mouse to zoom in.
4. Right click mouse again, uncheck “digital zoom” to close the zoom operation.


Activate the audio (camera supports audio and connect to the audio pick-up only)

1. In the live, Click headset icon “🎧” on the top right corner to hear the voice from the IP camera.



Important: You need to enable the audio in the “encode” in order to record the footage with audio.


PTZ control (camera with motorized zoom lens only)

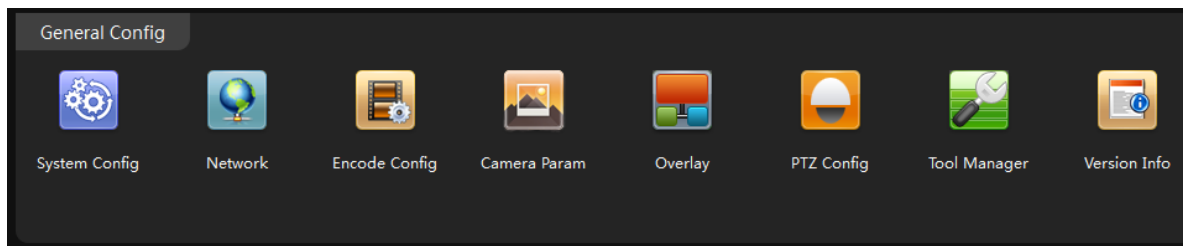
1. In the live, click the joystick icon  on the top right window, a joystick panel appear
2. Click the panel button, you can pan/tilt/zoom with camera



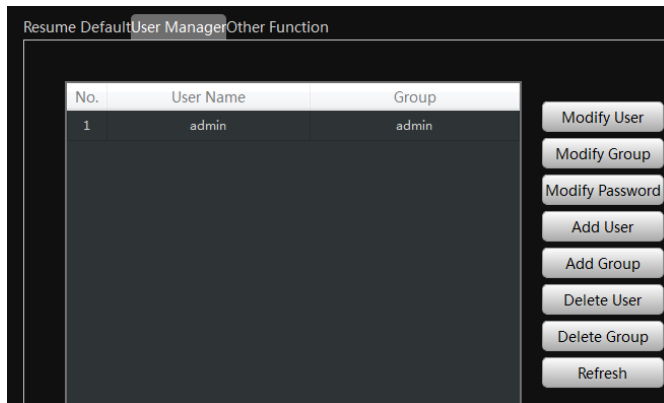
Change the Password of the Camera

Set a new password for “admin”

1. In the "Main" , click "Device Config". Enter "Tool Manager" on the right screen, A new screen appear.



2. In the top left menu, select the camera for which you want to change the password.
3. Click “User Manager” on the top screen.



3. Click "Modify Password". A new screen pop up. Enter the old password and your new password. Click "OK" to save.

Note: The default password is blank

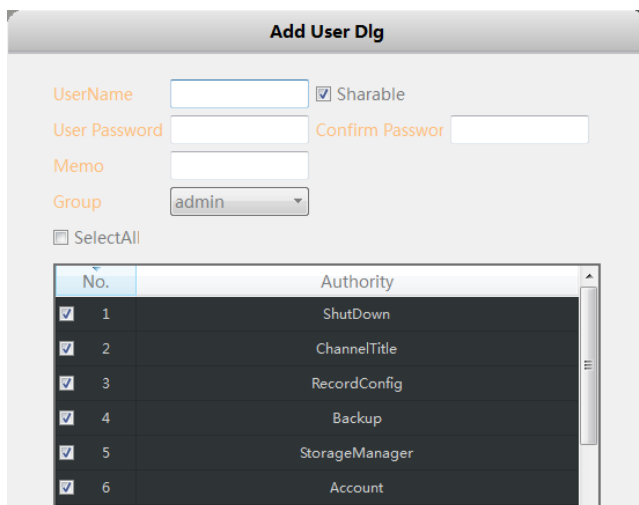
Optional1: How to create an account for operator?

1. Click "Add User", a new screen pop up.
2. Key in the Username, Password.

NOTE: Mark "Sharable" will allow more than one operator use the same account.

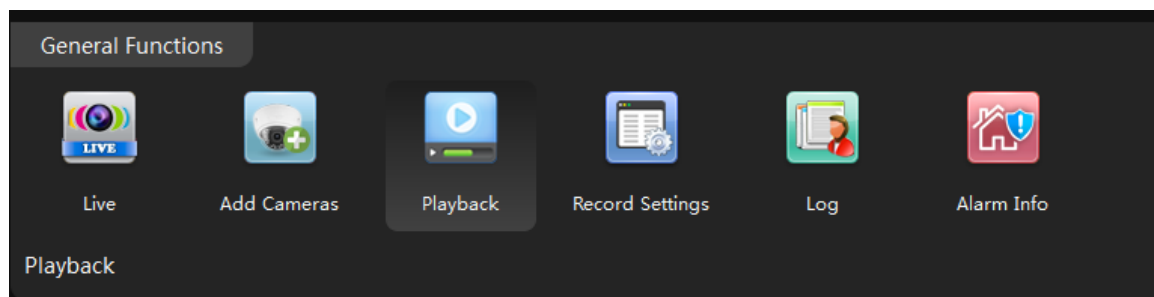
3. Allocate the authority to this account. Click "OK" to save

NOTE: Operator who login with account only can use the permissions what you ticked.

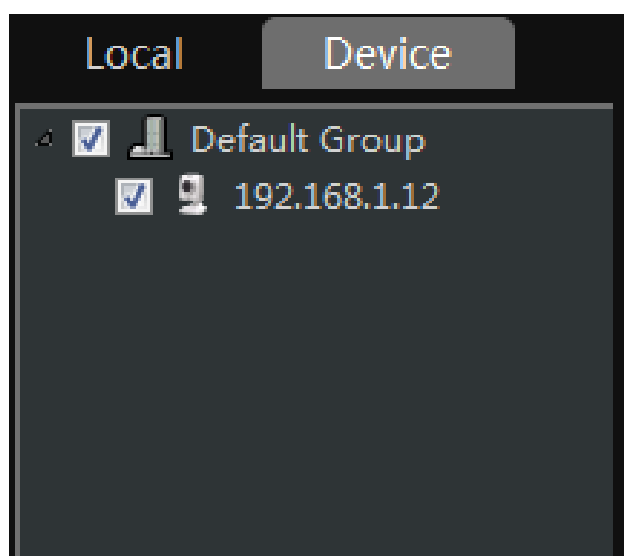


Playback the video from Hard Driver

1. In the "Main" , Click "Playback" .

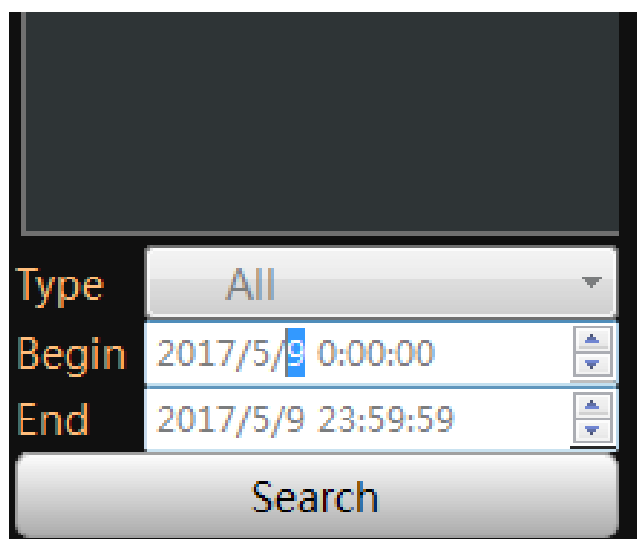


2. Click "Device" to playback the footage on TF memory card.



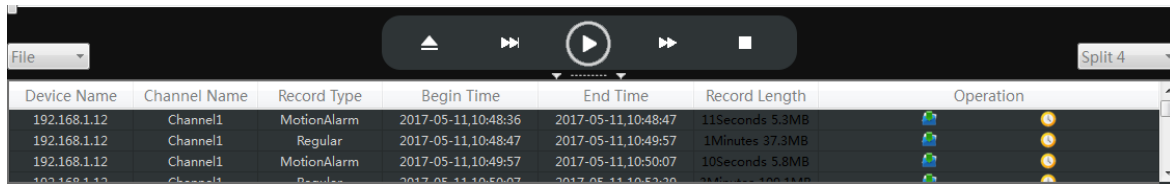
NOTE: If choose "Local", The CMS5 will try to search the footage on the PC computer.

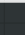
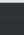
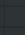
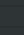


3. Check and select the camera you want to playback.
4. Select the time period in the lower right corner.




NOTE: It only can search footage within a single day.

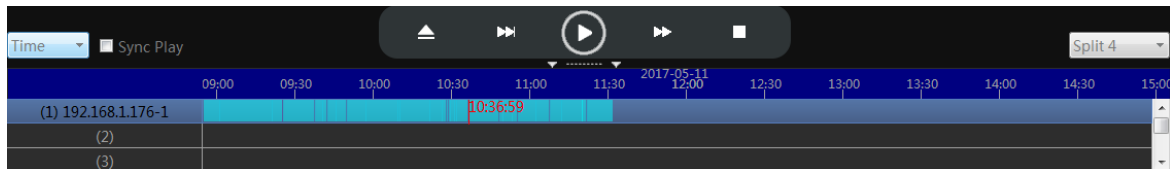
4. Click "Search". The search result will display as below.

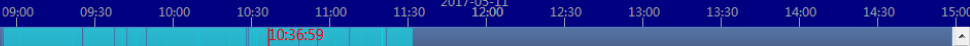


Device Name	Channel Name	Record Type	Begin Time	End Time	Record Length	Operation
192.168.1.12	Channel1	MotionAlarm	2017-05-11,10:48:36	2017-05-11,10:48:47	11Seconds 5.3MB	 
192.168.1.12	Channel1	Regular	2017-05-11,10:48:47	2017-05-11,10:49:57	1Minutes 37.3MB	 
192.168.1.12	Channel1	MotionAlarm	2017-05-11,10:49:57	2017-05-11,10:50:07	10Seconds 5.8MB	 

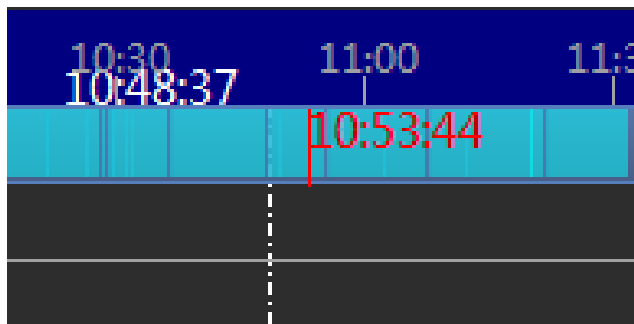
5. Select the footage from the list, click play button , the software will start play.

6. Choose the "Time" over "File" at the left corner, the time frame will appear.




Time	Sync Play
(1) 192.168.1.176-1	
(2)	
(3)	

7. Move the mouse to the time frame, time will display in white. Click the mouse, the software will start playback the footage from this moment.

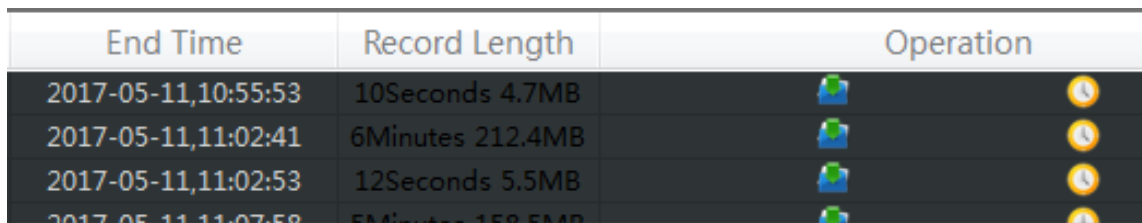










NOTE: the time in red is current playing time stamp.


Download the video to your computer hard drive

1. Click the download icon  on the time frame, the software will start download the footage from the front device.

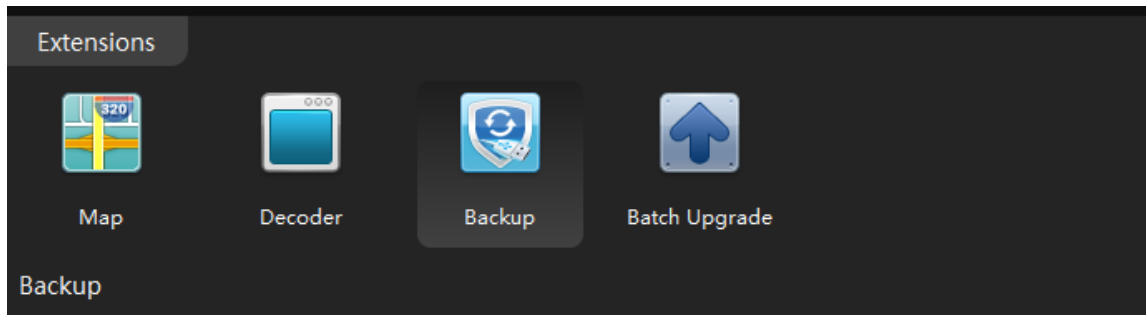
NOTE: the icon will change to red flag  when download is completed.



End Time	Record Length	Operation
2017-05-11,10:55:53	10Seconds 4.7MB	 
2017-05-11,11:02:41	6Minutes 212.4MB	 
2017-05-11,11:02:53	12Seconds 5.5MB	 
2017-05-11,11:07:58	5Minutes 159.5MB	 

2. Click the red flag  to view the downloaded file in your PC computer.

3. Return to "Main" , Click the Backup icon .



4. Click the browser next to H.264 Record file and select the recording file from local PC
5. Select the save folder
6. Click H264 to avi Convert to convert the file to avi format.



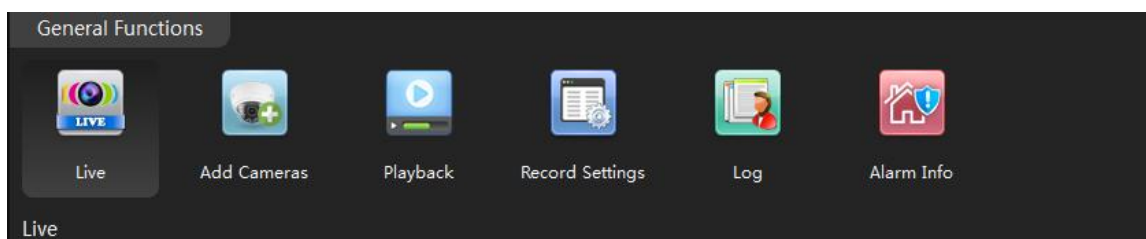
NOTE: You can find the download folder from "Main" -> System Config

Other options

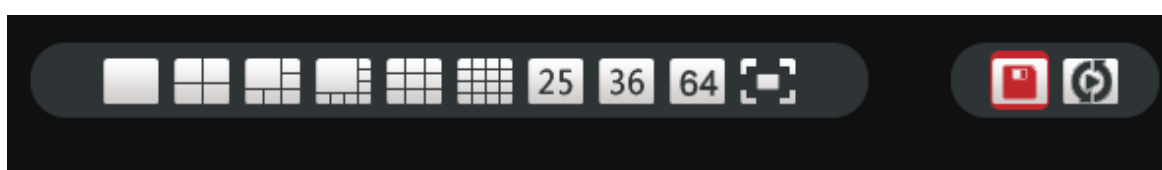
Video View

User can record the current video layout and recall it later.

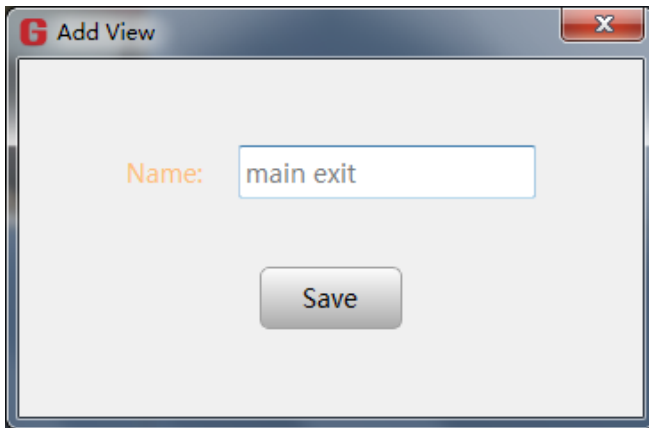
1. In the "Main" , click icon "Live"



2. Click this icon  in down corner to save current video layout



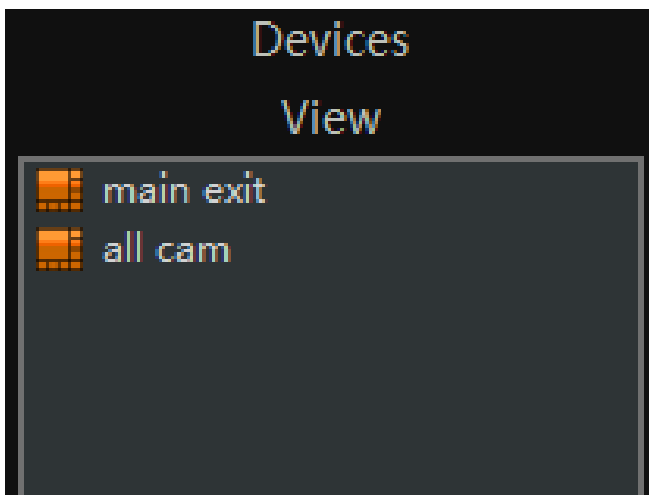
3. Name current layout, click Save.



4. Click the "View" to find the saved layout



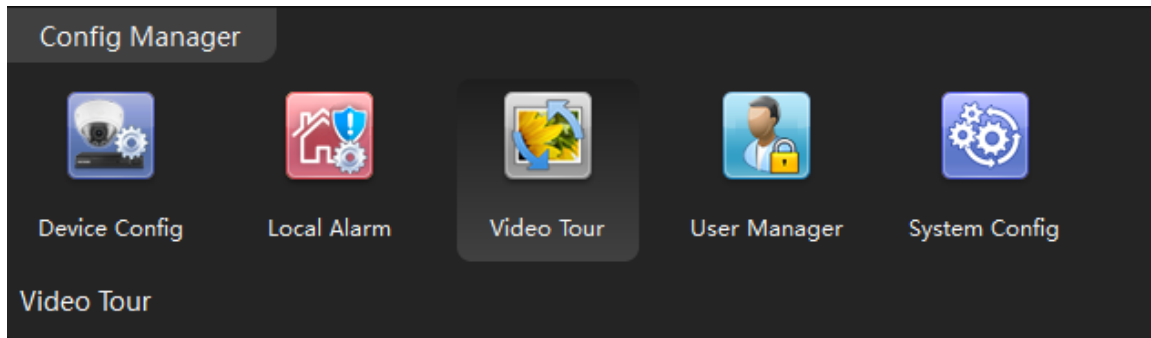
5. Click name to view the call up the saved layout.



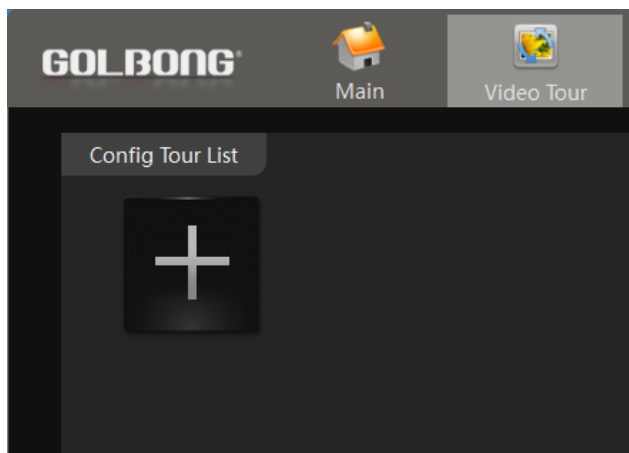
Video Tour

User can pre-set the video layout and make it displays sequentially.

1. In the "Main" , click icon "Video tour"



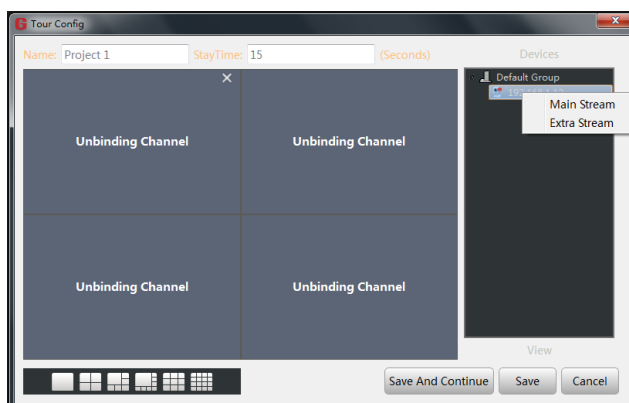
2. Click + to program the new video layout.




2. Name the layout, fill in the dwell time between two layout.
3. Click a window to activate that channel.

NOTE: Before binding a camera to a window, it should activate that window.

4. Right click the camera list to select the main stream or sub stream for that window.

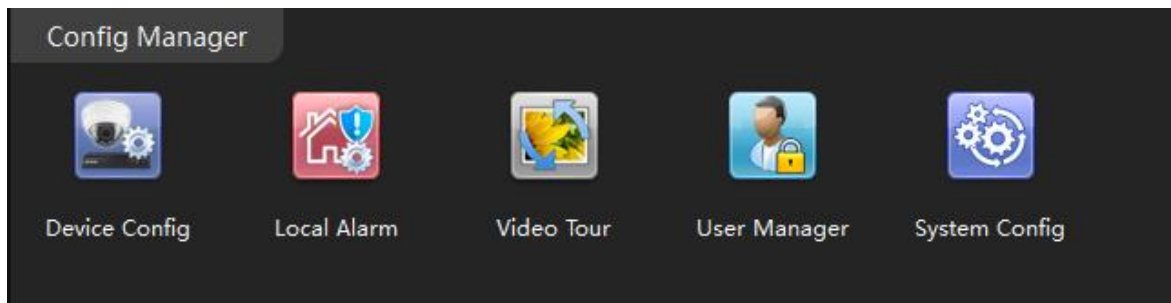


5. repeat step 3 until you finish all the binding.
6. Click "Save and continue" to add a new layout.
7. Repeat step 1 until you add all the layout.
8. Return to "Live", click the tour icon , the CMS5 will start display the layout in sequentially
9. Click tour icon again will stop the video tour.

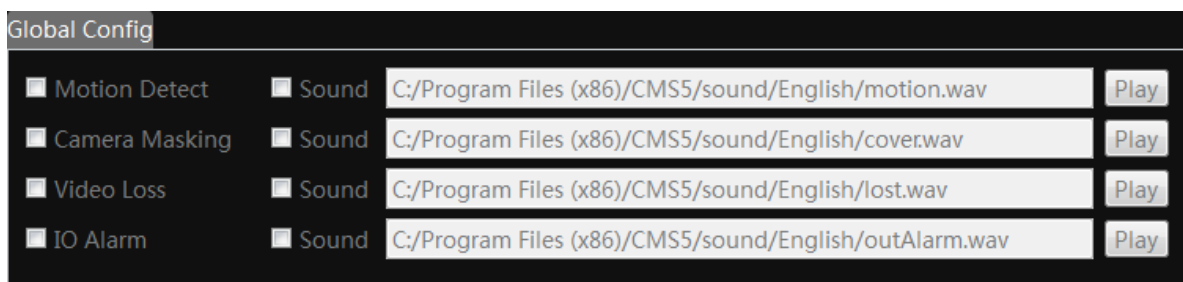
Local Alarm

User can set the sound alert to notify the operators on the PC



1. In the "Main" , click icon "Local alarm"

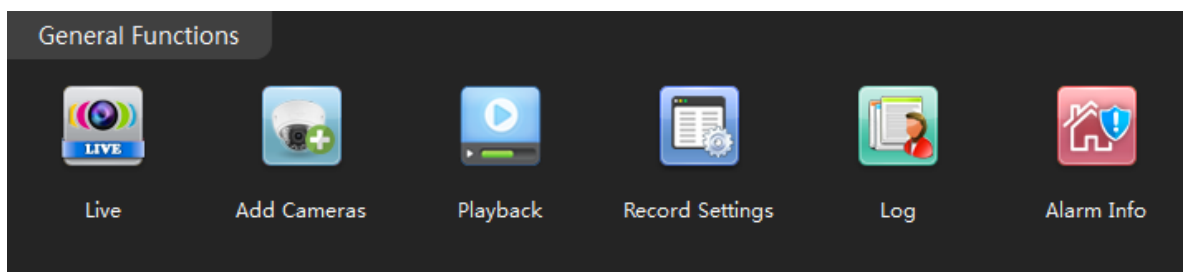


2. Mark the alarm type, the software will log the alarm to your PC computer.



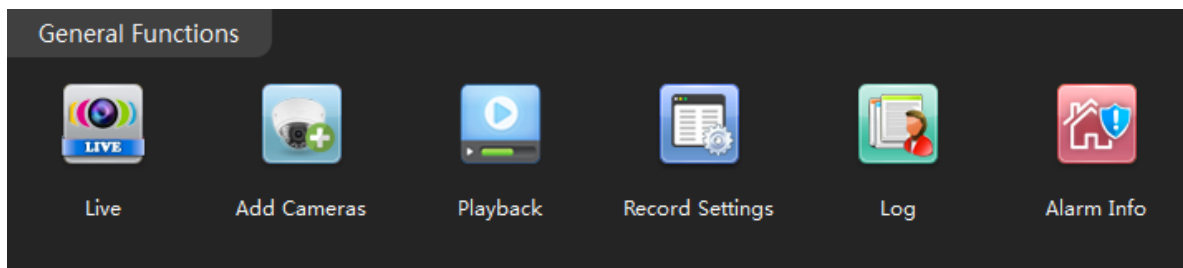
3. Mark the sound, CMS5 will play the audio file when alarm is triggered.

4. Return Main , click icon Alarm Info , you can check the alarm log.

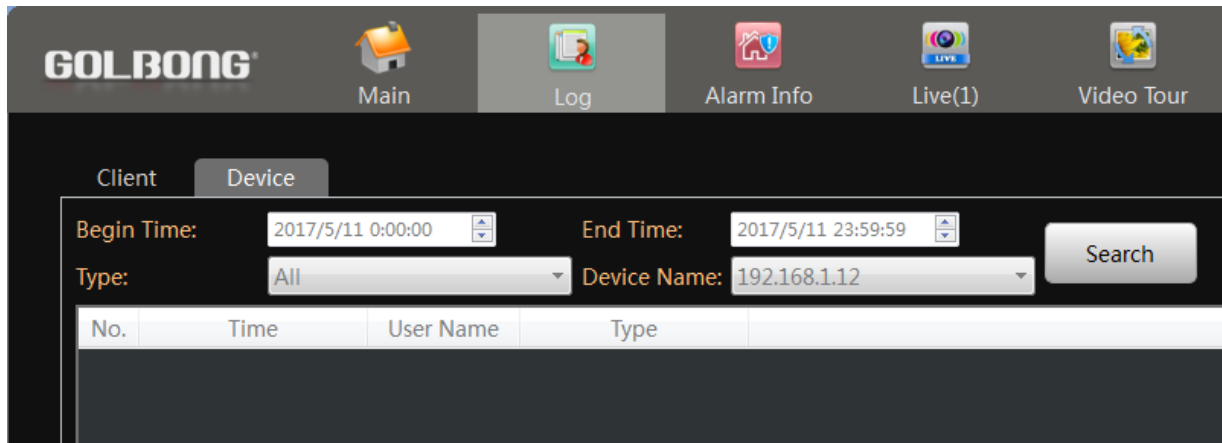


Check the log

1. In the "Main" , click "Log" 



2. Click the "Device" to search log storage on the camera.



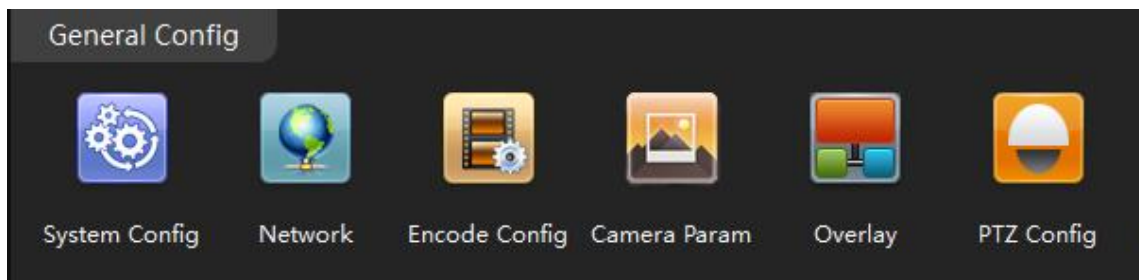
3. Select the time frame, log type, Device name
4. Click Search, the result will appear.

No.	Time	User Name	Type	Remark
1	2017-05-11 01:53:07		StorageManager	Disk Over
2	2017-05-11 07:29:51		StorageManager	Disk Over
3	2017-05-11 09:01:36		UserManager	[Modify Password]
4	2017-05-11 09:01:52	admin	UserManager	Logout
5	2017-05-11 09:02:02	admin	UserManager	[Login]islocked!

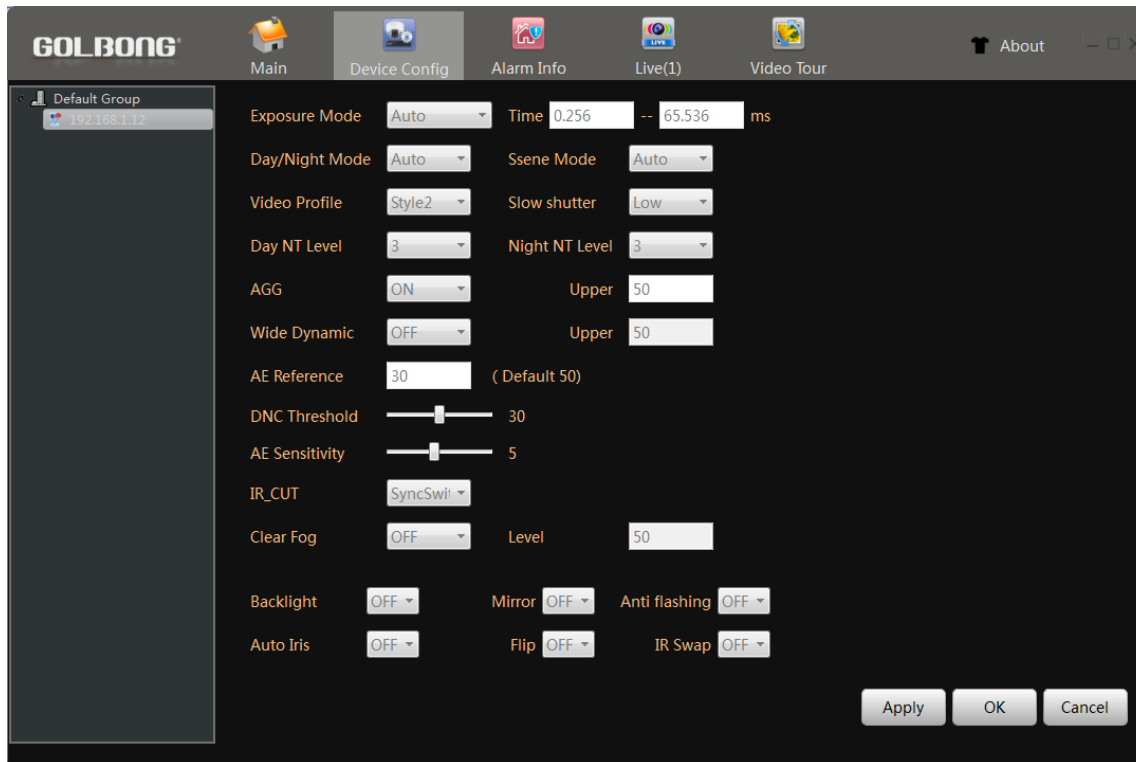
NOTE: Some of the log may requires turn on the "write log" in the Main -> Device Config -> Alarm Config.

Setting Camera Parameters

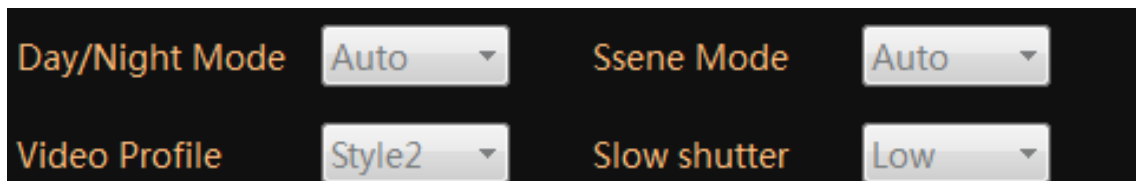
1. In the "Main" , click "Device Config" icon
2. Click "Camera param" 



3. A new screen appear.



3. Day/night Mode – Select “Color”, the camera will always stay on color.



NOTE: If the environment has significant street light at night, the camera can generate nice color night vision with color mode

- 3. Slow Shutter – Select “None” will erase motion blur, but low down the sensitivity.
- 4. Wide Dynamic – Turn on dynamic can improve the performance with strong contrast, but scarify the color reproduction and generate more noise in low light condition.
- 5. IR_CUT – select auto switch, the camera will switch to black and white and sense the infrared basing on the visible light illumination.

NOTE: Select auto switch can make the covert camera see infrared on the sense at night.

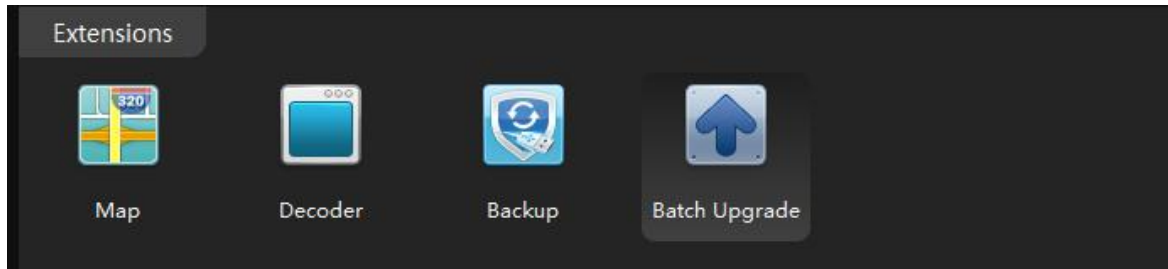
6. DNC Threshold – Change the threshold to switch between color and black/white.

NOTE: If the camera keep switch around between color and black/white, DNC threshold can improve the performance.

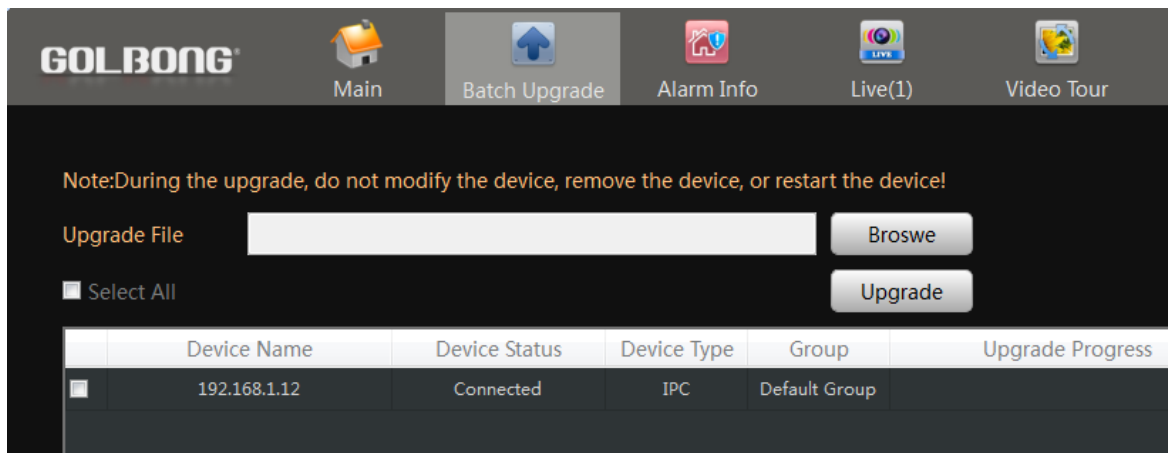
7. Mirror & Flip – Turn the image upside down. It can help deploy the camera from wall mount to ceiling mount.

Installing a new Firmware

1. In the "Main" , click icon "Batch Upgrade" 



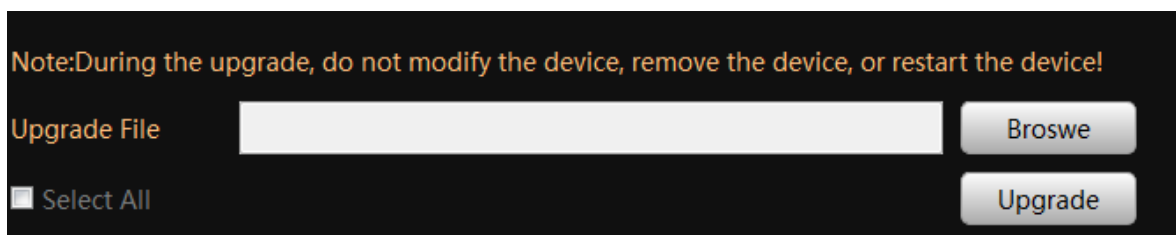
2. Select the camera/NVR from the list



IMPORTANT: Different model could use different firmware, unless you are sure all the mode share the same firmware, don't check "Select All"

3. Click the Browser to find the firmware.
4. Click "Upgrade" to upload the firmware.

WARNING! DO NOT power off the camera until it shows upgrade successfully in the "Result"



Smartphone or Tablet Apps

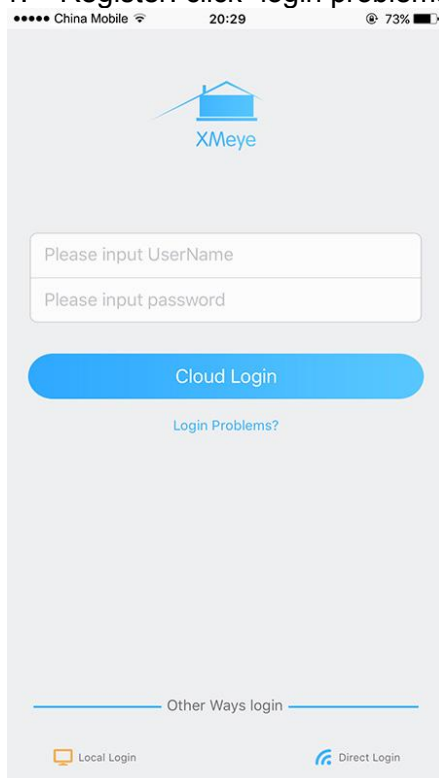
Download app

1. Download: Search and install the app “XMEYE” in app store or Google play.

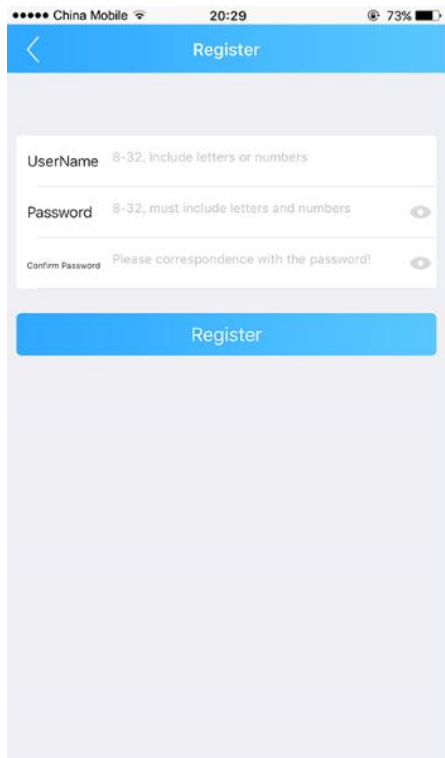


Registration

1. Register: click “login problems”, press “register” to create a new account.

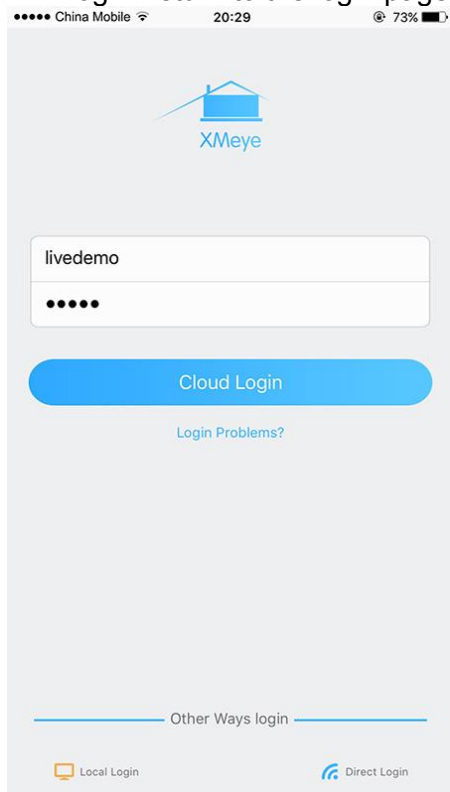


3. Input E-mail, press the icon “get code” to receive a register code.
4. Create a username and password after receive the code.



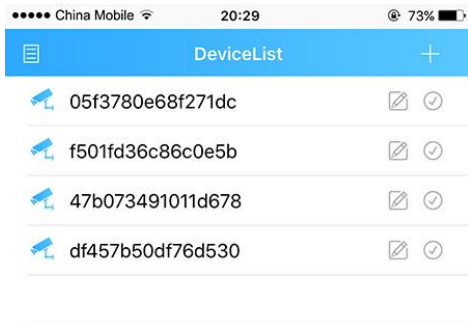
NOTE: the email must be valid to receive the code. The mail box also will use to recover the password in future.


4. Login: return to the login page, input your username and password, click “Cloud Login”.



Connecting to your ip camera on an smart phone or tablet.

1. Click the icon “+” on the upper right corner to enter search screen.

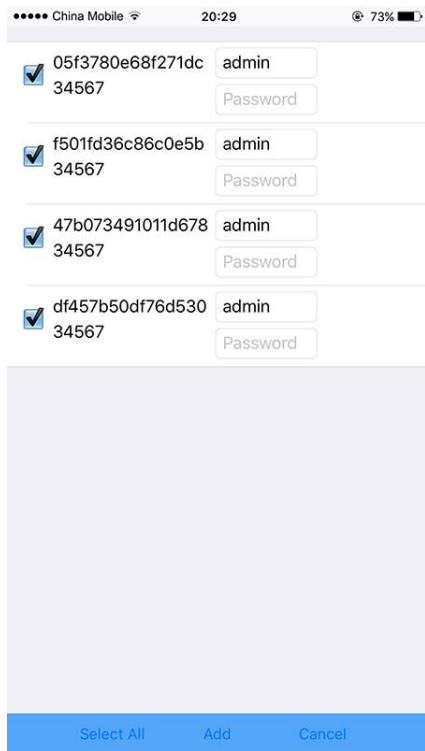


2. Press the “search” button .



NOTE: Make sure your phone has connected to your the local network.

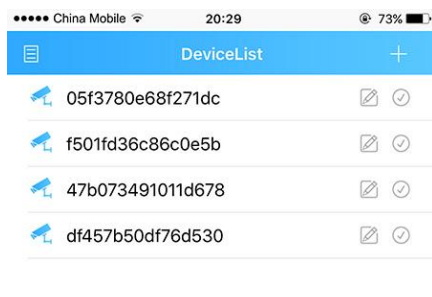
3. Select the check-box, then press the button icon“ Add” .



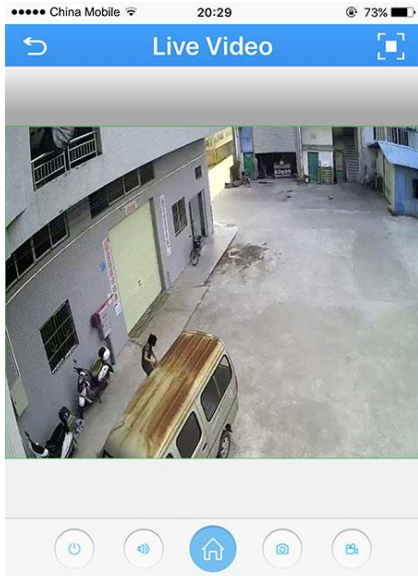
NOTE: Input the password if required, the default password is blank.

Live view interface

1. Click the camera name in the device list, the live view will display.

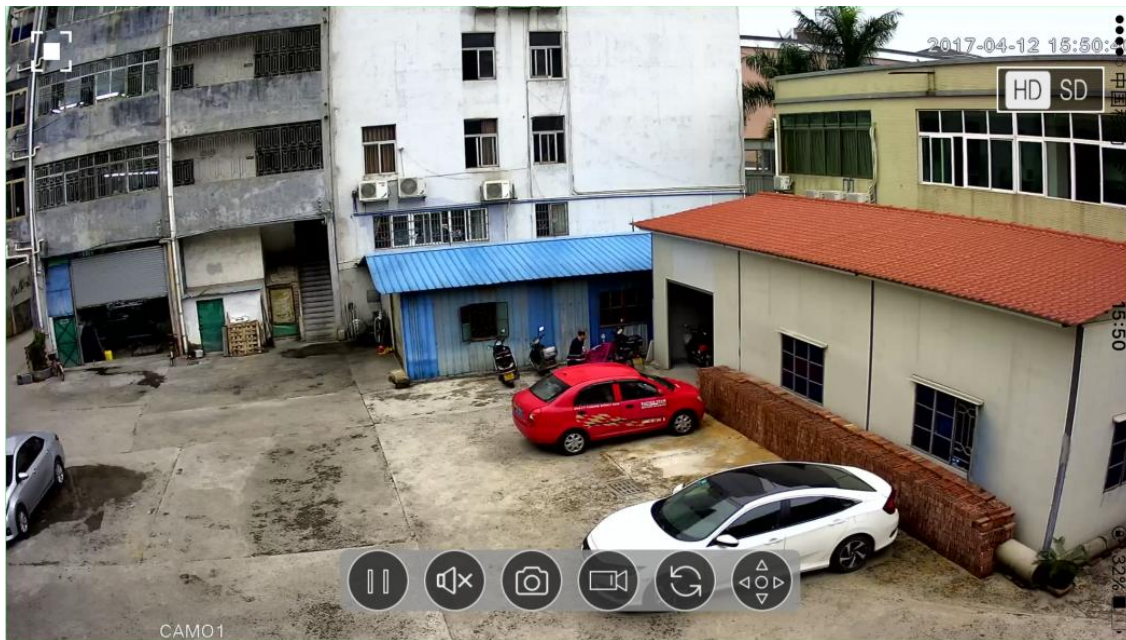


2. Press the square icon on the upper right corner to enlarge the video to full screen.



NOTE: The users can zoom in/out on the screen with fingers.

3. Click “SD/HD” to choose the video quality.



NOTE: “SD”: standard definition; “HD”: high definition.

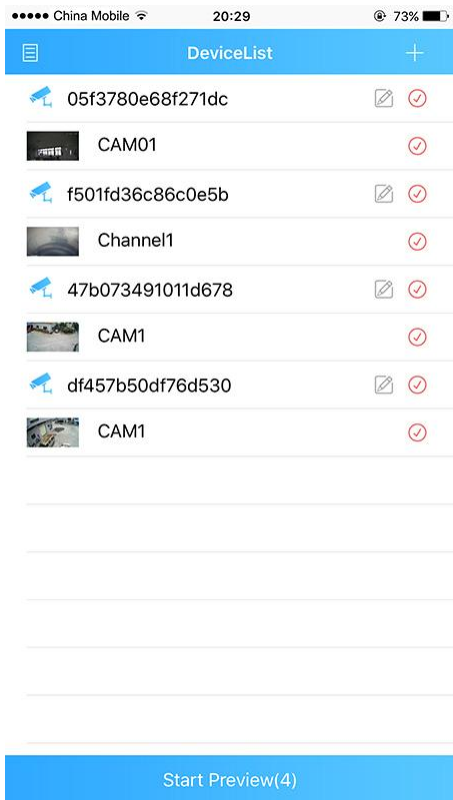
4. 4 channels: In the live video page, choose the number “4”, click “+” to add new channel to live.



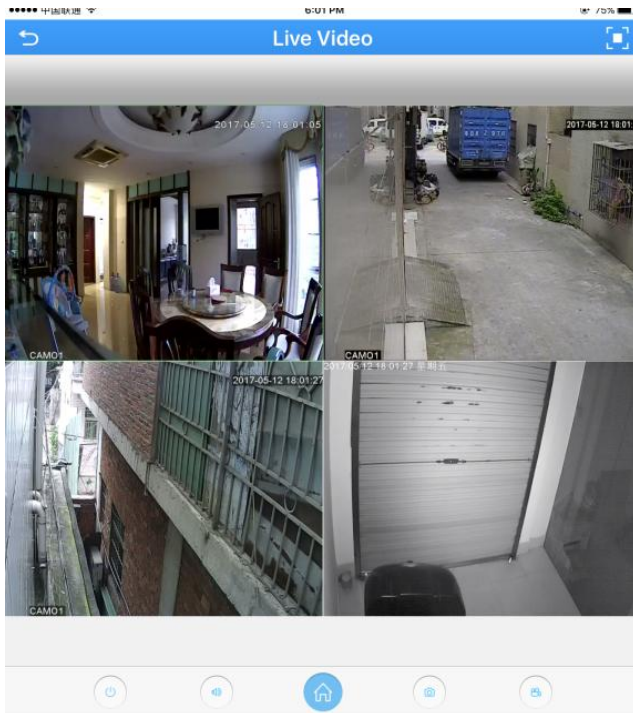
NOTE: User can select 1/4/9/16 channel


5. Touch the tick icon  on right to select the camera.

NOTE: The tick will change to red once selected.



6. Press the “Start preview” at the bottom to watch multi-channel video.




7 Press speaker button  to hear the voice from the camera



NOTE: Your camera must support audio and connects to audio pick up.

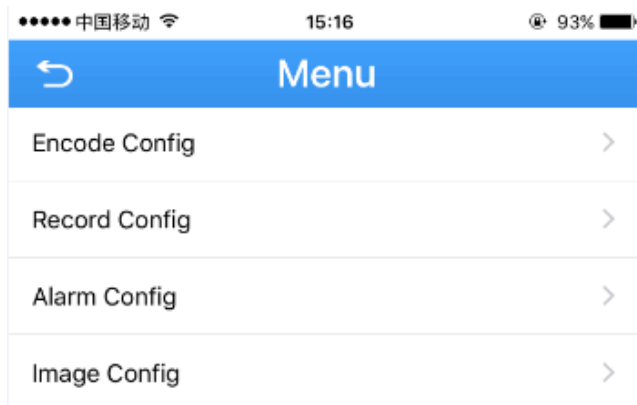
Optional

How to change the video quality to adapt to low bandwidth network.

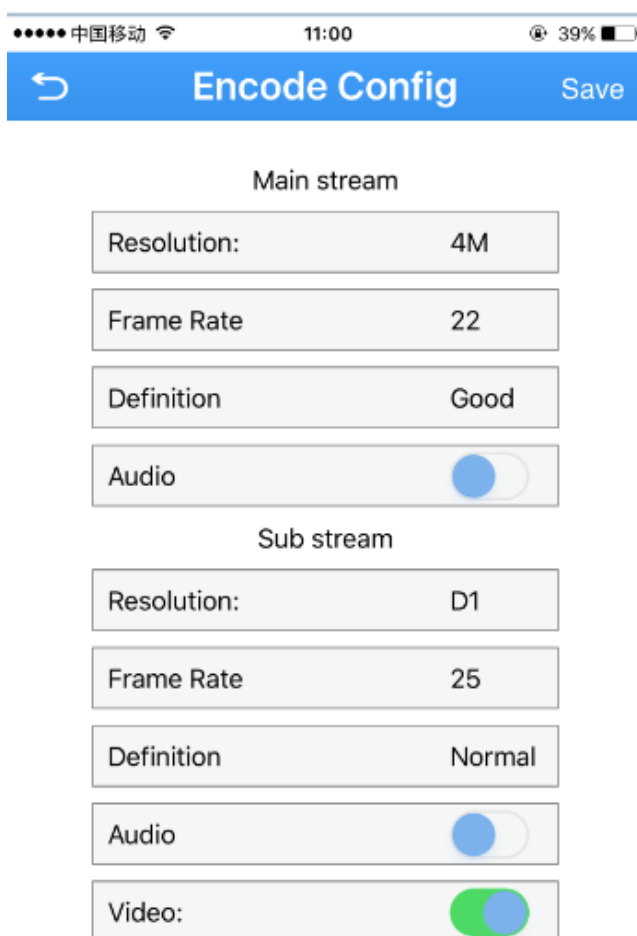
1. Return to the Live Video page, click the Home icon 



2. Touch “Encode” in the menu



3. Adjust the main stream and the sub stream to adapt to your network bandwidth.

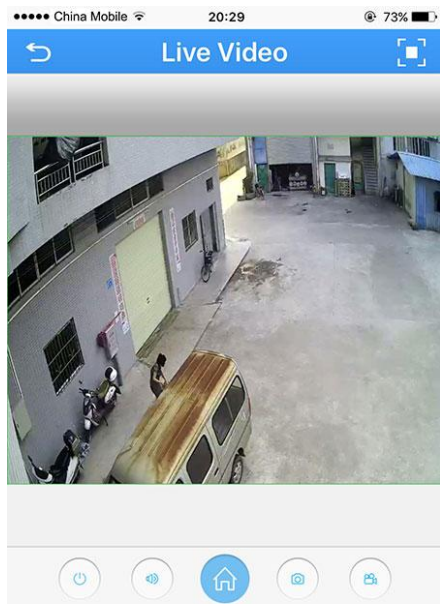


NOTE: higher frame rate and resolution require higher bandwidth

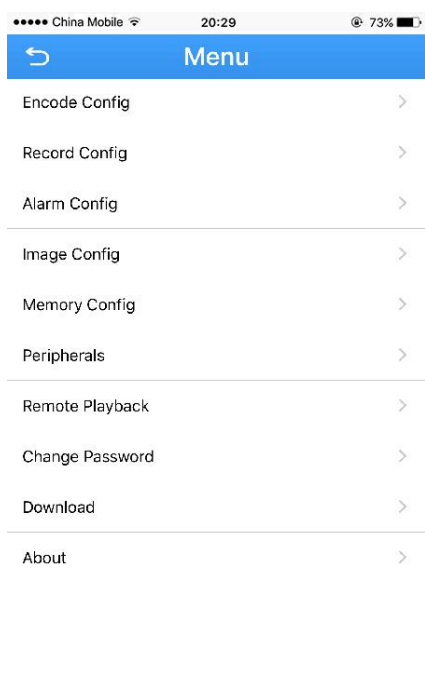
Change Password of Camera.

1. Return to the Live Video page, click the Home icon





2. In the Menu page, press the “Change password ”



3. Input old password and a new password. Click “Save”



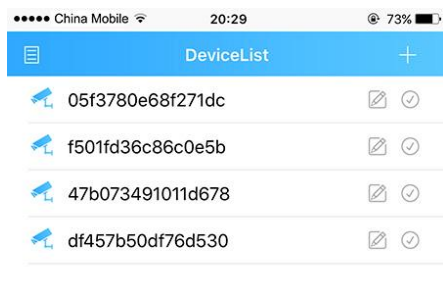
NOTE: default password is blank.(No need)

Change Device name

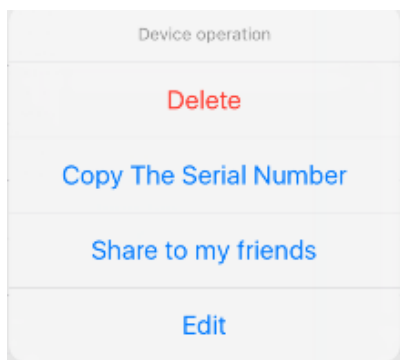
1. Click return icon  to enter Device list



2. click the edit icon  , a new screen pop up



3. Select "Edit"

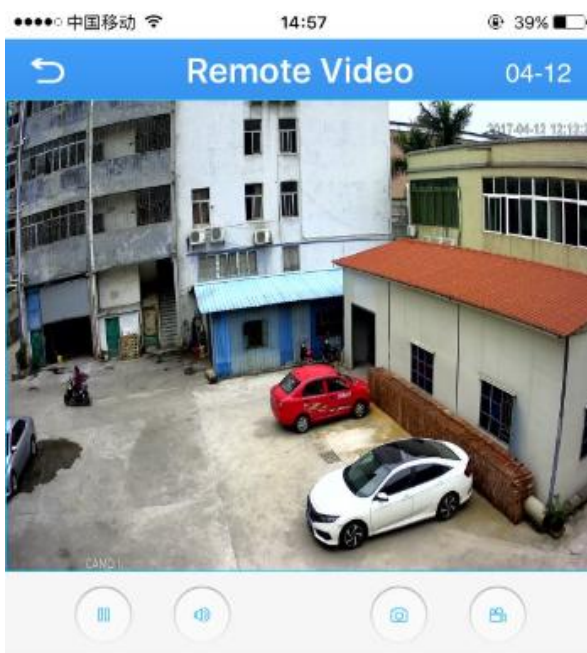


2. Name the device, key in the new password if require. Click OK to save.




Saving live stream to your smart phone

1. Return to the Live Video page, press “camcorder” button to start recording

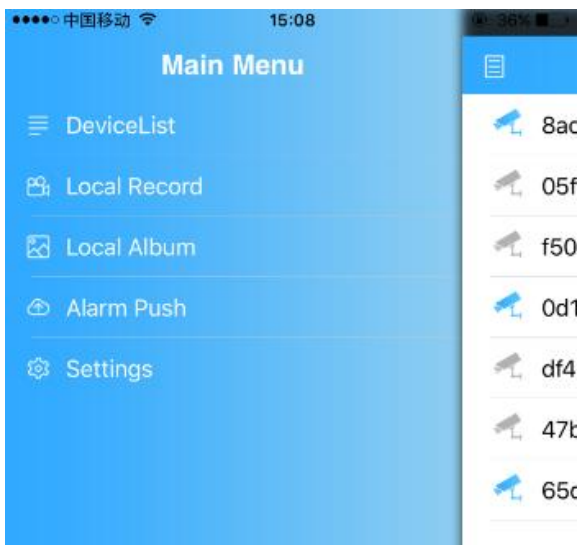


NOTE: Camcorder button will change to Blue when recording is activated.

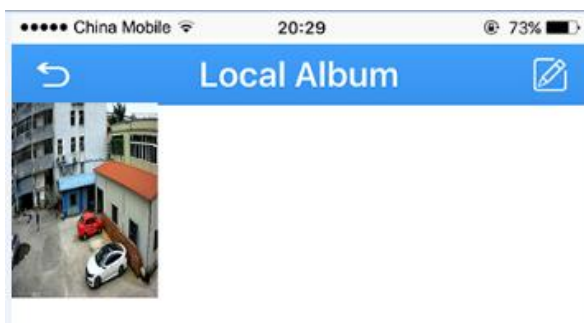
2. Press camcorder button again to save the video
3. Click return icon  to enter Device list




4. Press the list icon to enter the main menu

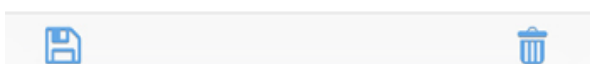


5. Touch “local record” to locate the video on your smart phone. Press the snapshot will start play the video on your phone.



6. Press the edit icon  on top right corner, press snapshot to select the video.

7. Press the save icon  to save the video to your phone.

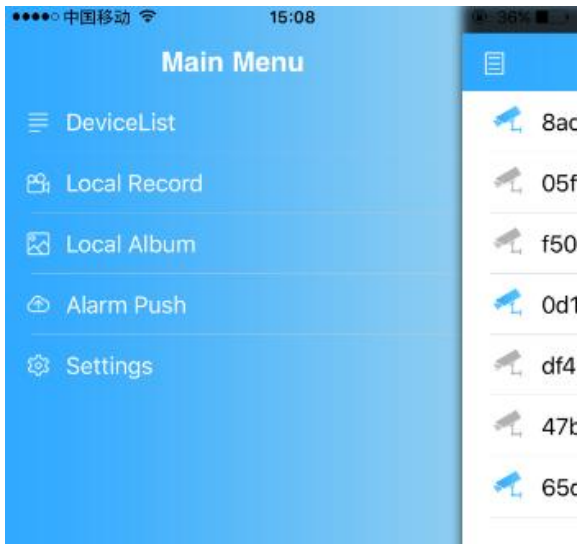




View snapshot at local files

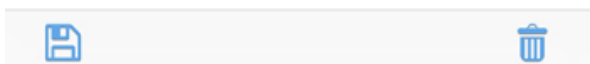
1. Click return icon  to enter Device list



2. Press the list icon to enter the main menu



3. Touch "Local Album" to view the snapshot.
4. Press the edit icon  on top right corner, press snapshot to select the picture.
7. Press the save icon  to save the snapshot to your phone.

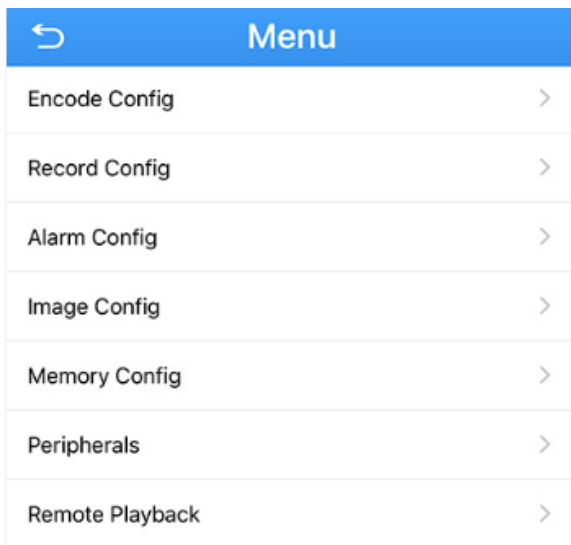


Playback footage on TF memory card (cameras with microSD only)

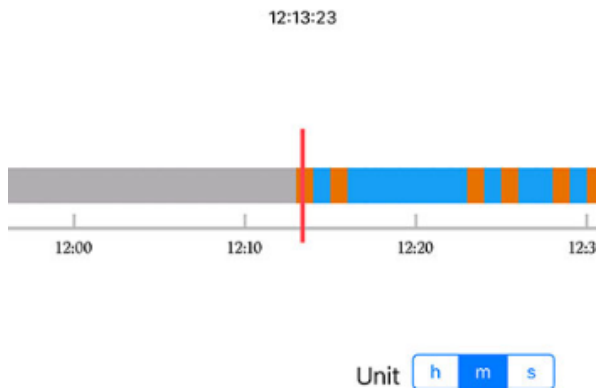
1. Touch home icon in the live view page.



2. Press "Remote playback" from the menu

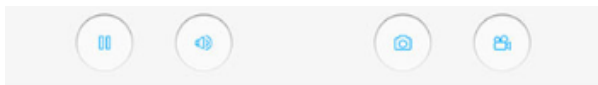


3. The playback video will display. Press the button on right corner, you can select the time unit: h/m/s



NOTE: the footage block in Yellow is the video with motion detection. You need to enable the motion recording function in the camera to see the red block.

4. Press the speaker icon to activate the sound.

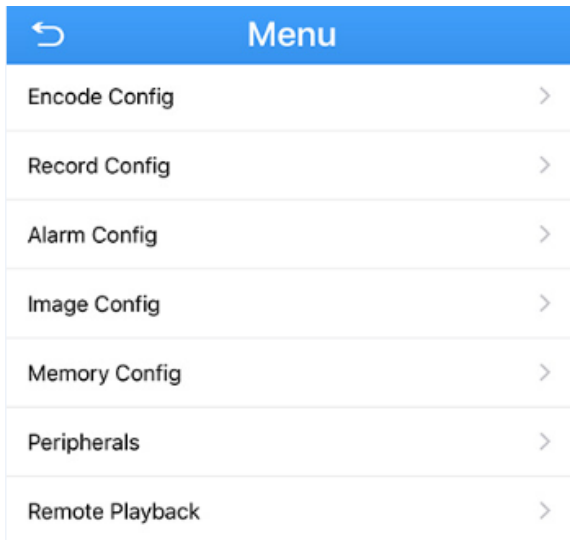


NOTE: Your camera must support audio and connects to audio pick up.

Optional

How to enable the motion recording on your smart phone.

1. Select “Alarm Config” from the menu, enter a new screen.

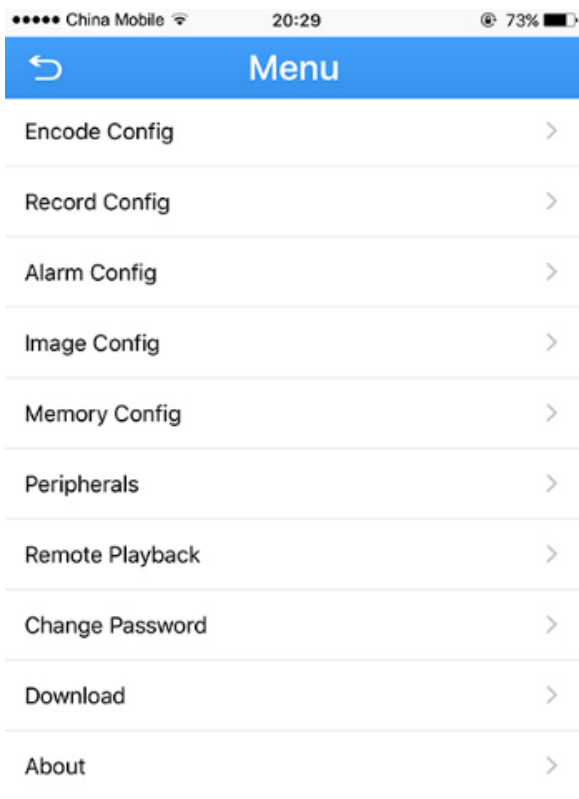


2. Press the “Motion detection”, enable “alarm”, “alarm record”, press “OK” to save.

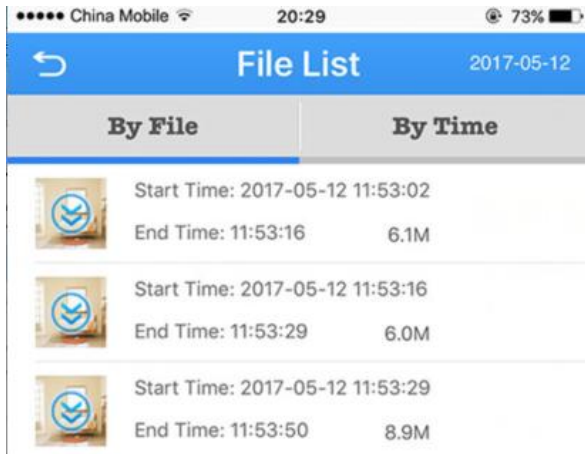




Download footage from TF memory card (Cameras with microSD only)

1. Enter "Menu", press "Download"




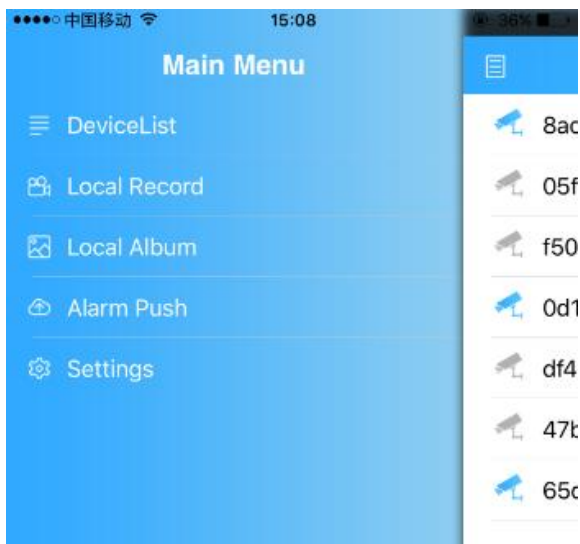
2. Choose either download by file or by time



3. Click the “Download”  icon, the app start downloading by file
4. Click  icon twice to return to device list



5. Press the  icon to enter the main menu



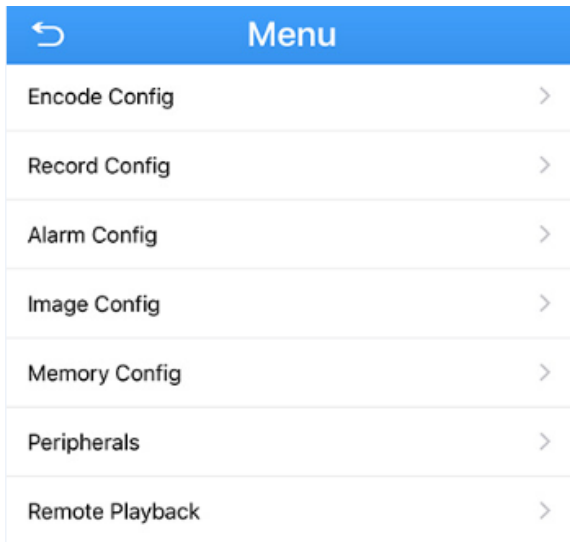
6. Touch local record to view the download video.

Enable Push Notification

1. Touch home icon in the live view page.



2. “Alarm Config” from the menu, enter a new screen.




3. Press the “Motion detection”, enable “Send To Phone”, press “OK” to save.



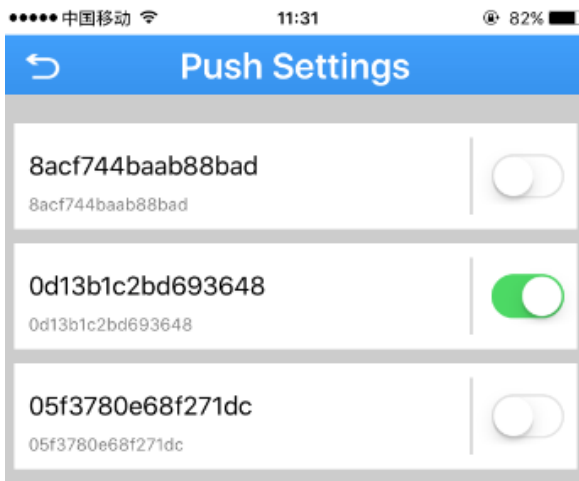
4. Click  icon twice to return to device list



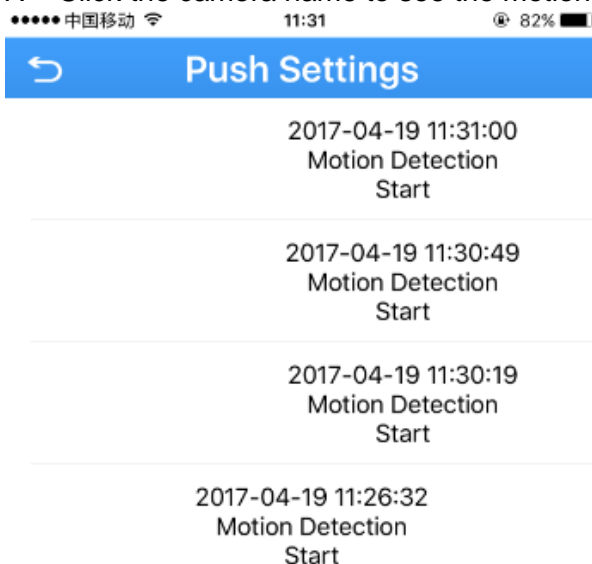
5. Press the  icon to enter the main menu



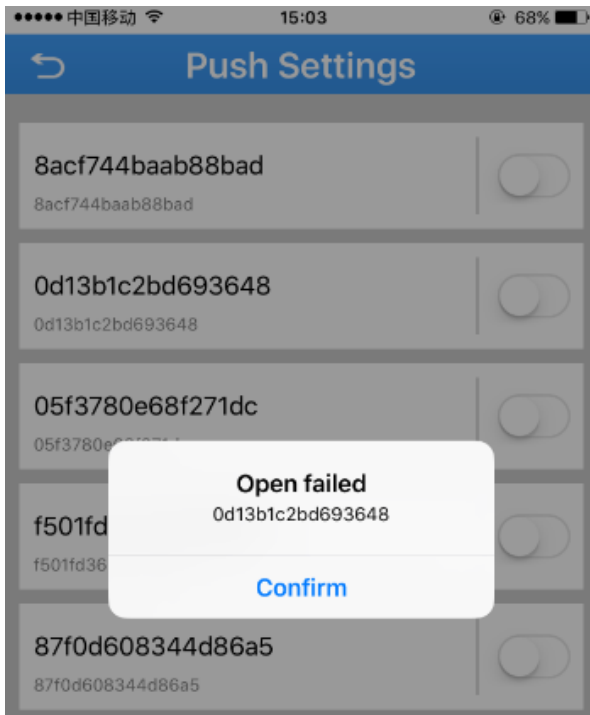
6. Press Alarm Push, Slide the icon to right turn on alarm push notification.



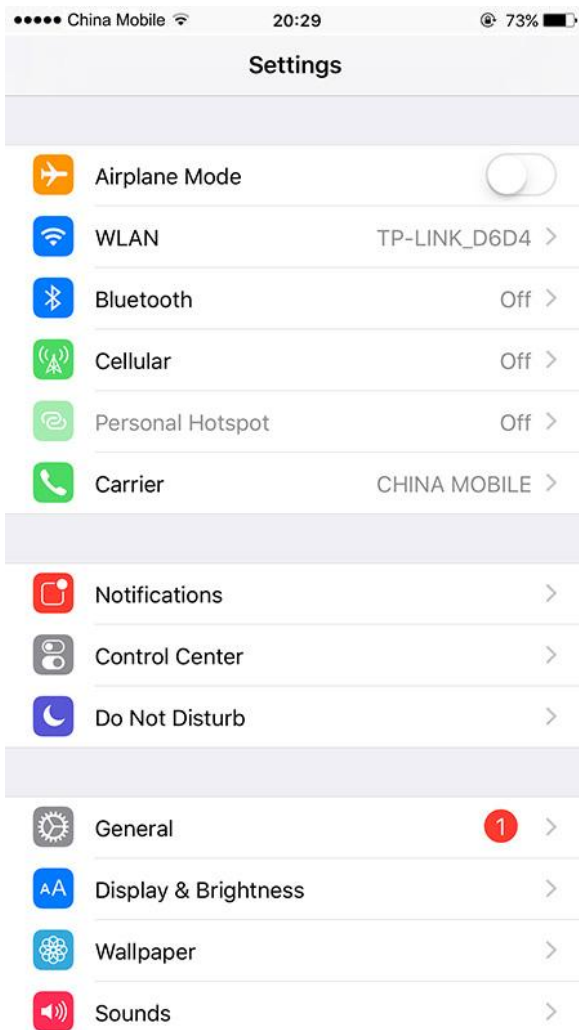
7. Click the camera name to see the motion detection detail of the camera.



8. In push setting, if the “open failed” pop up on screen, that mean we need to give this app authority to receive push message. It usually happens with iOS.



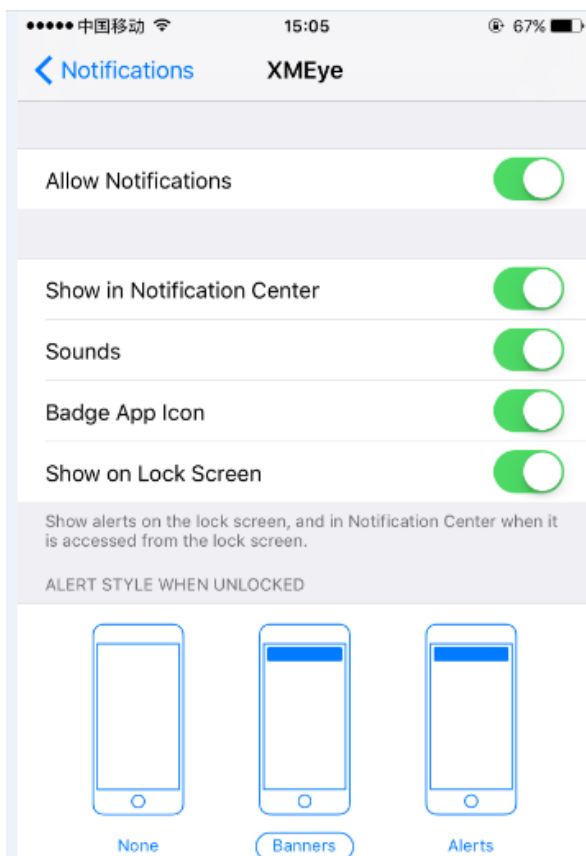
9. Go to settings of your iPhone.



10. Touch “Notifications”, and find XMEYE



11. In the XMEYE page, slide the icon to right to enable the notification function from you smart phone.



Receive the IP setting from your local network.

If the IP camera don't have correct IP setting, especially DDNS, it will failed to receive the push message.

1. Touch home icon in the live view page.



2. Touch “set Network” from the menu, enter a new screen.

3. slide the enable to right turn on DHCP. The camera will reboot and receive the IP setting from your local network.

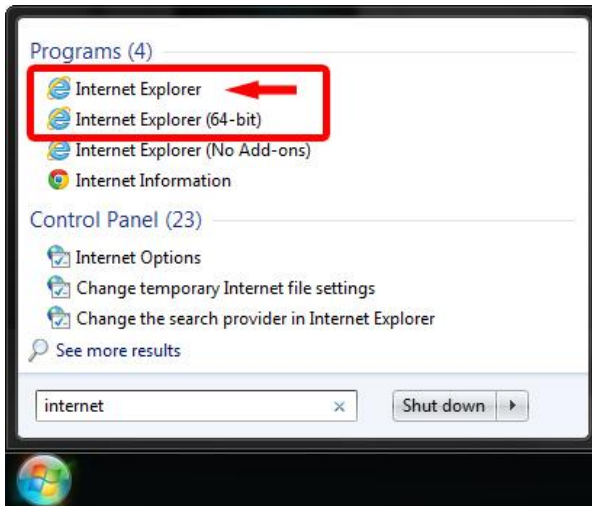
4. Check the “set Network” again after 1-2 minutes, slide the enable to left if you want to fix the IP address.

Web Browser connection

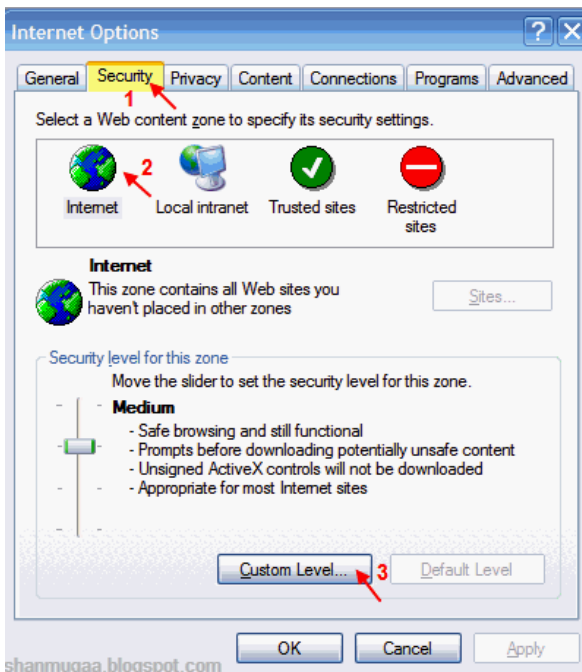
Checking your web browser security level

When using the web browser interface, you can install ActiveX controls to connect and view video using Internet Explorer. However, if you cannot download data, such as video and images due to the increased security measure. you should check the security level of your PC so that you are able to interact with the cameras over the web and, if necessary, modify the Active X settings.

IMPORTANT: The ActiveX plugin only support 32bit version, choose the Internet Explorer over Internet Explorer (64 bit) in windows-7



1. In Internet Explorer click Internet Options on the Tools menu.
2. On the Security tab, click the zone to which you want to assign a web site under “Select a web content zone to specify its security settings”.
3. Click Custom Level.



4. Change the ActiveX controls and plug-ins options that are signed or marked as safe to Enable. Change the ActiveX controls and plug-ins options that are unsigned to Prompt or Disable. Click OK.

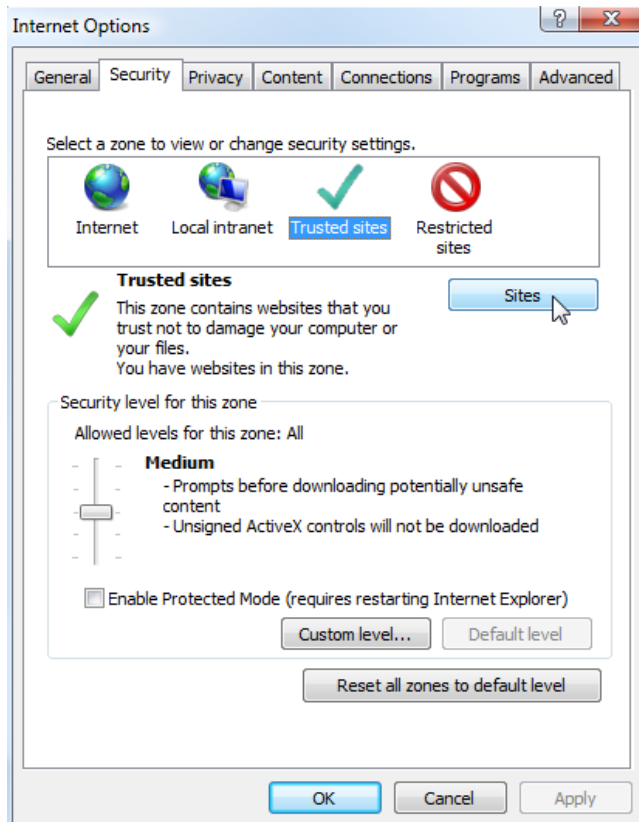


5. Click Apply in the Internet Options Security tab window.

Windows 7 or above users

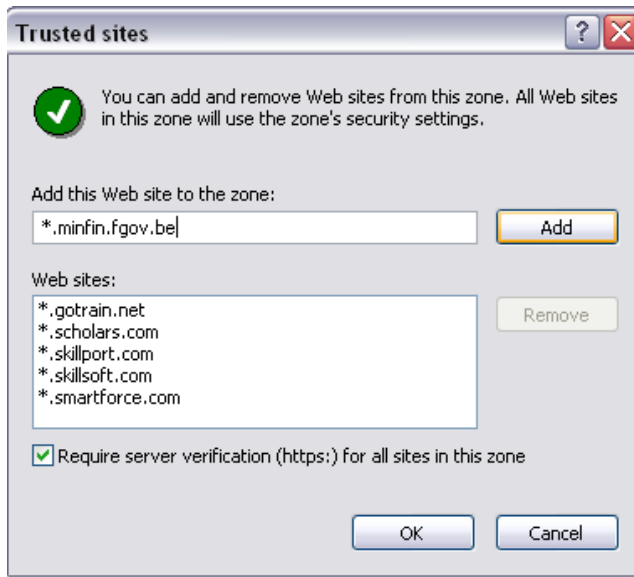
Internet Explorer for Windows 7 or above operating systems have increased security measures to protect your PC from any malicious software being installed. To have complete functionality of the web browser interface with Windows 7, do the following to add the camera's IP address to your browser's list of trusted sites

1. Run the Browser interface as an administrator in your workstation
2. Click Tools, and then Internet Options
3. Click the Security tab, and then select the Trusted sites icon.
4. Click the Sites button.



5. Clear the "Require server verification (https:) for all sites in this zone box

6. Enter the IP address in the “Add this website to the zone” field.



7. Click Add, and then click Close
8. Click OK in the Internet Options dialog window.

Access the camera over internet

1. In the web browser enter the camera’s IP address (default is 192.168.1.10), The Login dialog box appears.

NOTE: Ensure that the Active X controls are enabled.

2. Enter your user name and password.

Username: admin

Password: (no require)




3. Click Login. The web browser window appears in live view mode.

Playback | Log | DeviceCfg | LocalCfg | Log Out

NetSurveillance

- CAM01
- D02
- D03
- D04



2017-05-13 18:39:29

CAM01

Golbong CopyRight 2017, All Rights Reserved

GOLBONG

Step(1-8): 5


Zoom Focus Iris

Preset: 1

Tour: 1

Color Other

Default



Serial ID
Closing

Note:

- To view setup videos for many of the steps outlined in this guide, go to <https://www.youtube.com/golbongtoday>
- This user manual is for reference only. Slight differences may be found in the user interface.
- All the designs and software here are subject to change without prior written notice.
- All trademarks and registered trademarks mentioned are the properties of their respective owners.

To contact GOLBONG support, please do one of the following:

- a. Visit <http://www.golbong.com/contact-us.asp> and use the email form
- b. or Email GOLBONG Customer Support: support@golbong.com

Copyright GOLBONG® 2017

GOLBONG®